



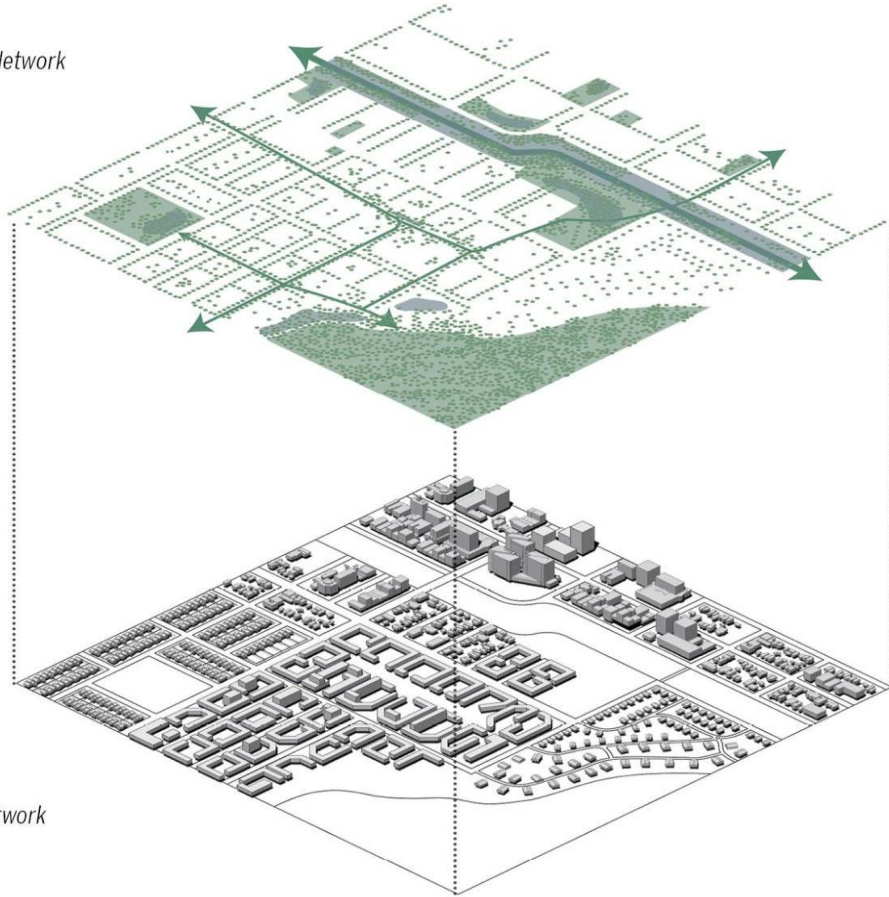
Moffett Park Specific Plan

Understanding the Future: Ecology



Multi-benefit Strategy

Nature Network



Built Network

- Investments in urban greening can help:

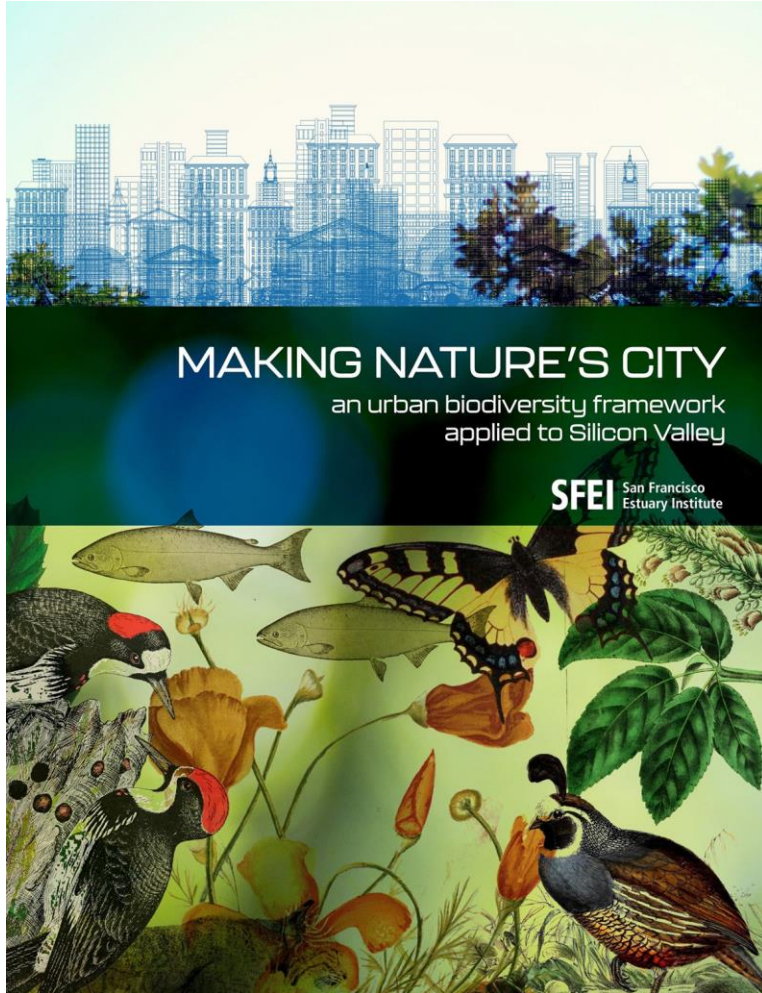
- Support biodiversity
- Improve human experience and wellbeing
- Sequester and store carbon
- Reduce stormwater runoff
- Mitigate urban heat islands
- Filter air pollutants
- And more!

Science-based Framework

Making Nature's City: An Urban Biodiversity Framework

Synthesizes global literature into practical approach

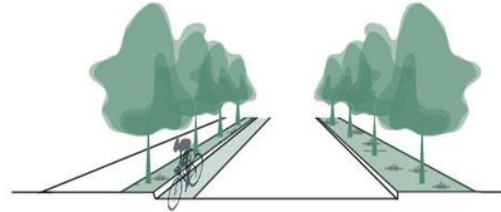
"A landmark report" -- IUCN



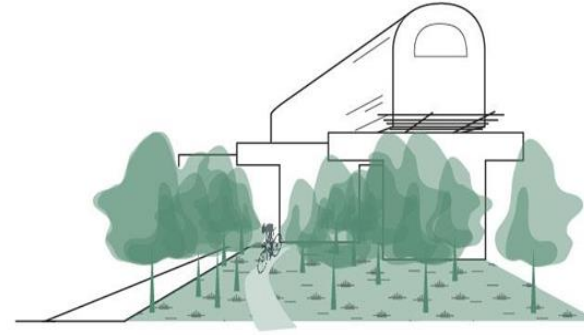
1. Patch Size



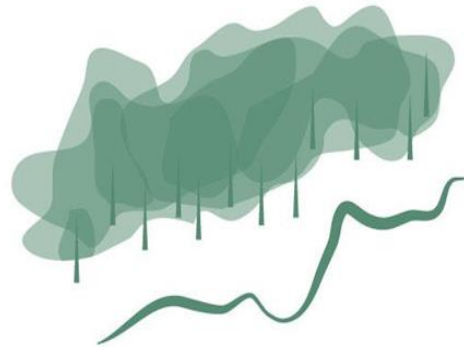
2. Connections



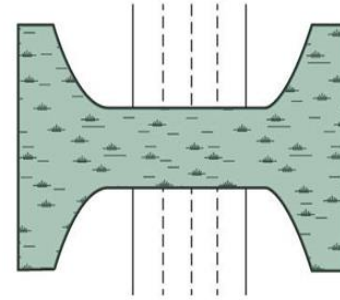
green streets



greenways



riparian corridors



wildlife crossings

3. Matrix Quality

Landscaped areas

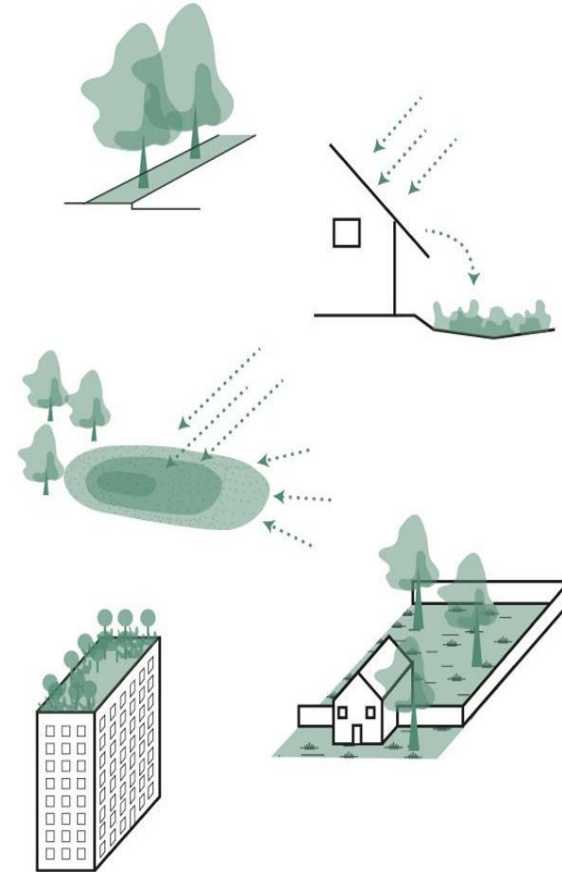
Residential yards

Street trees

Green roofs

Green infrastructure

Flood detention basins



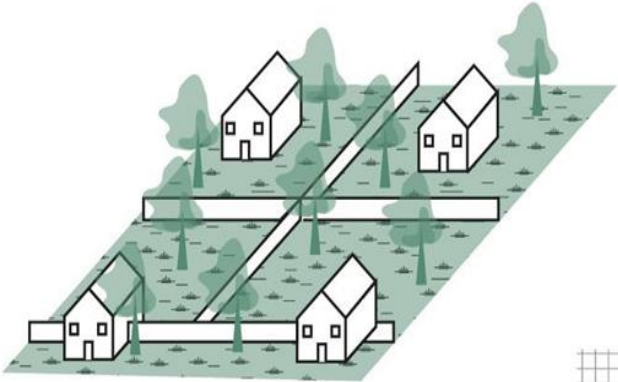
Arrange in relation to patches & corridors



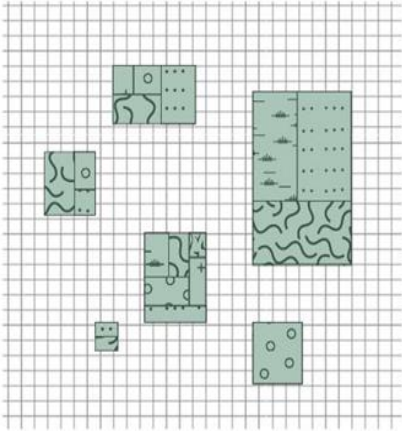
4. Habitat Diversity



appropriate habitat type for a place



increases coherence @neighborhood scale



creates heterogeneity of habitats across cities

5. Native Vegetation

diversity and abundance



6. Special Resources

streams



ponds



large trees



lakes



wetlands



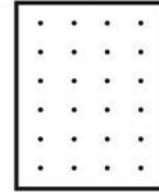
7. Management



downed logs



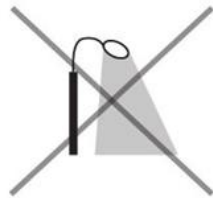
leaf litter



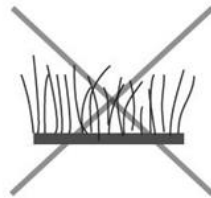
bird-friendly windows



nest boxes



light pollution



lawns






frequent mowing

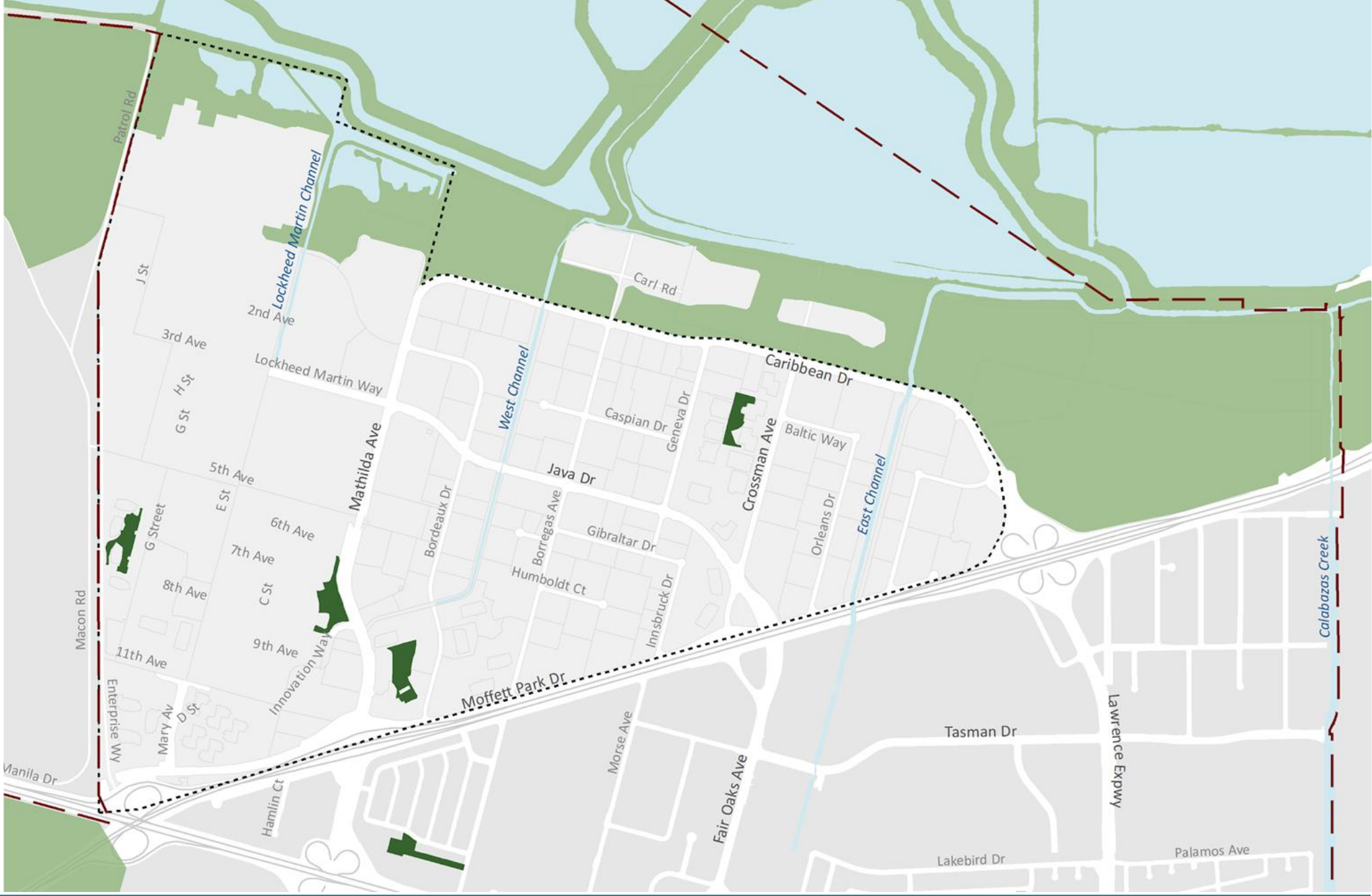


pesticides and herbicides



Patch Size

-  **Habitat Patches**
(2-10 acres)
-  **Local Biodiversity Hubs**
(10-130 acres)
-  **Regional Biodiversity Hubs**
(>130 acres)



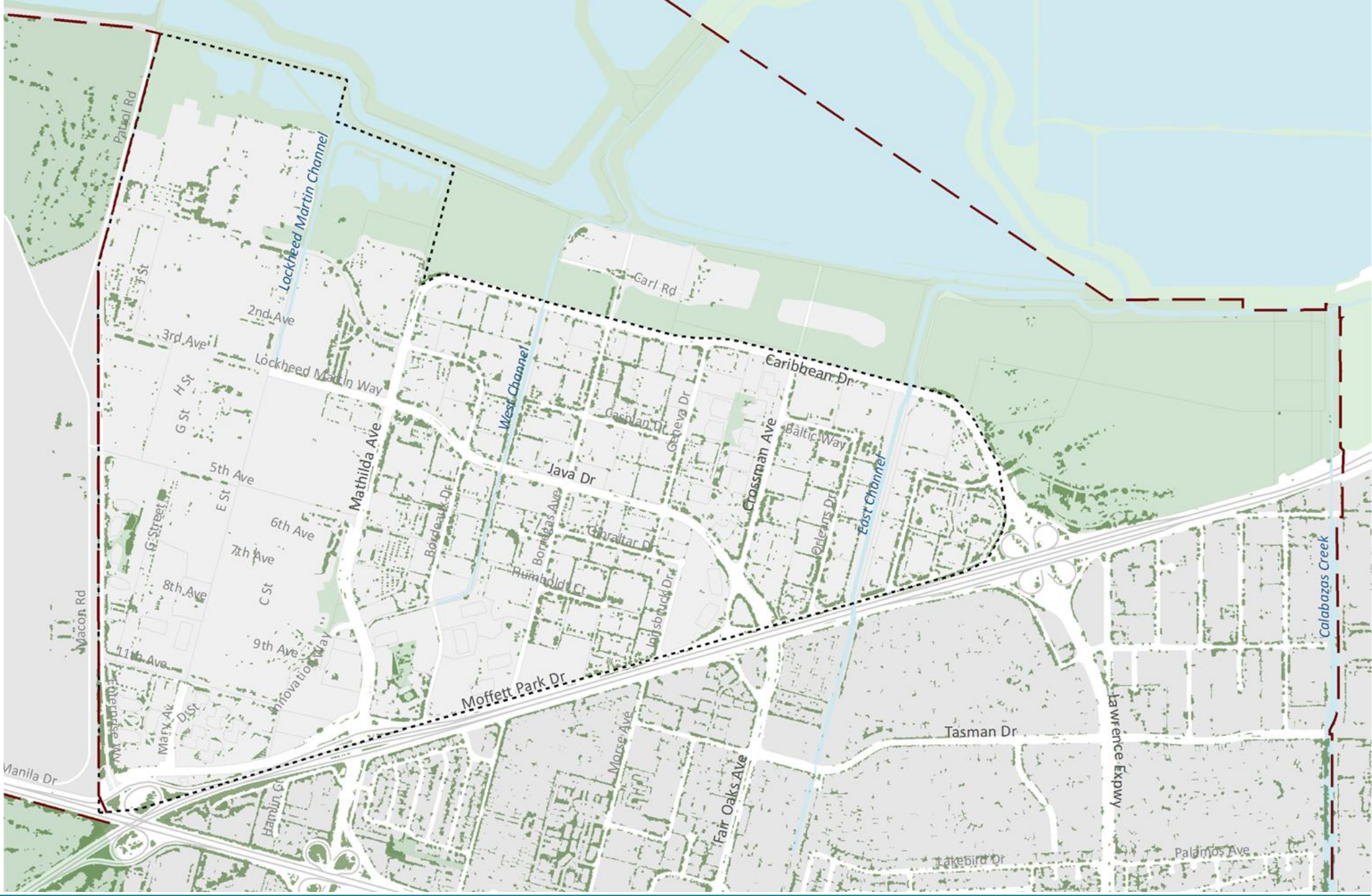
Connections

- Open Channel
- Culverted Channel
- Barrier

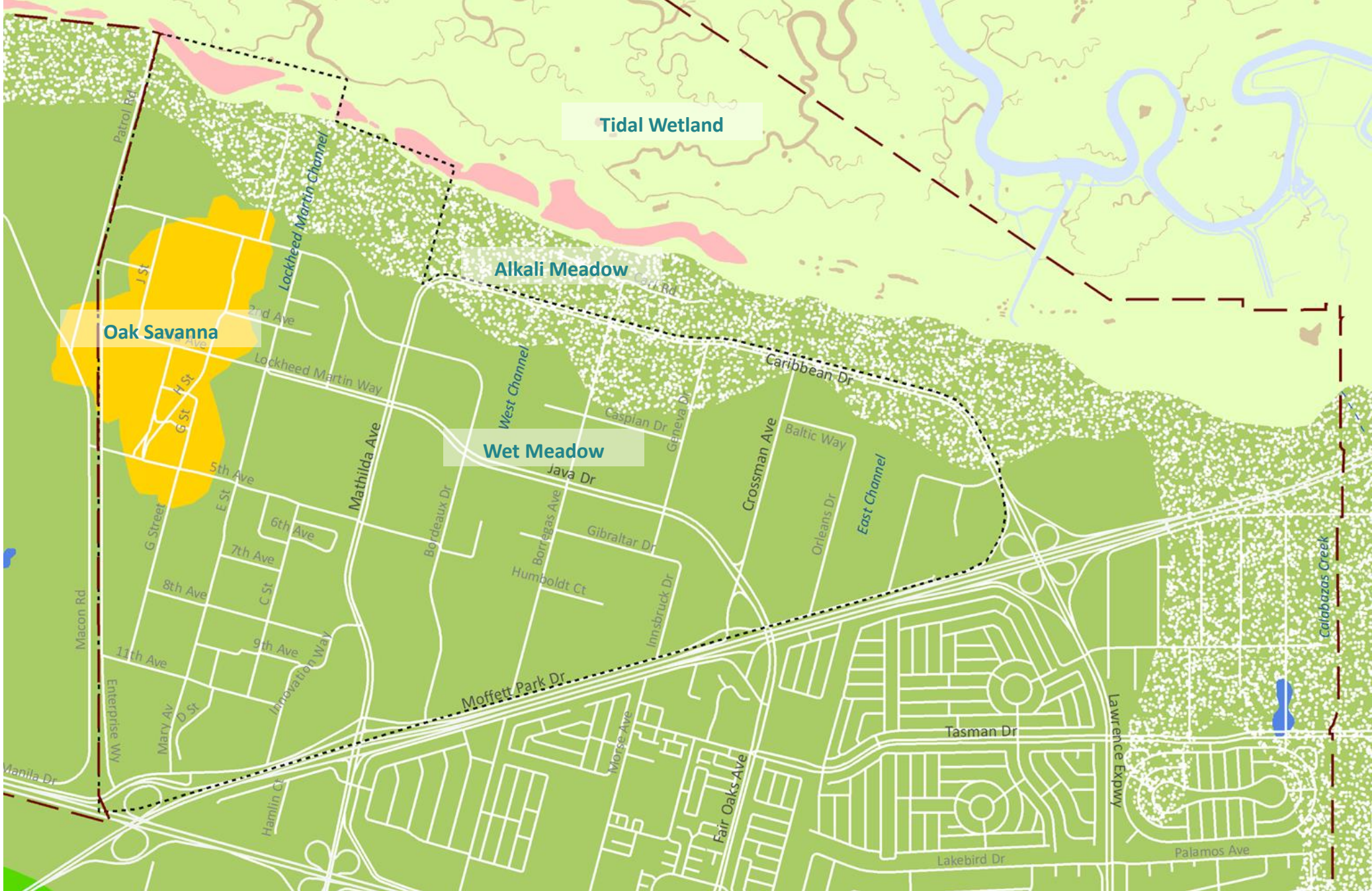


Matrix Quality

■ Tree Canopy

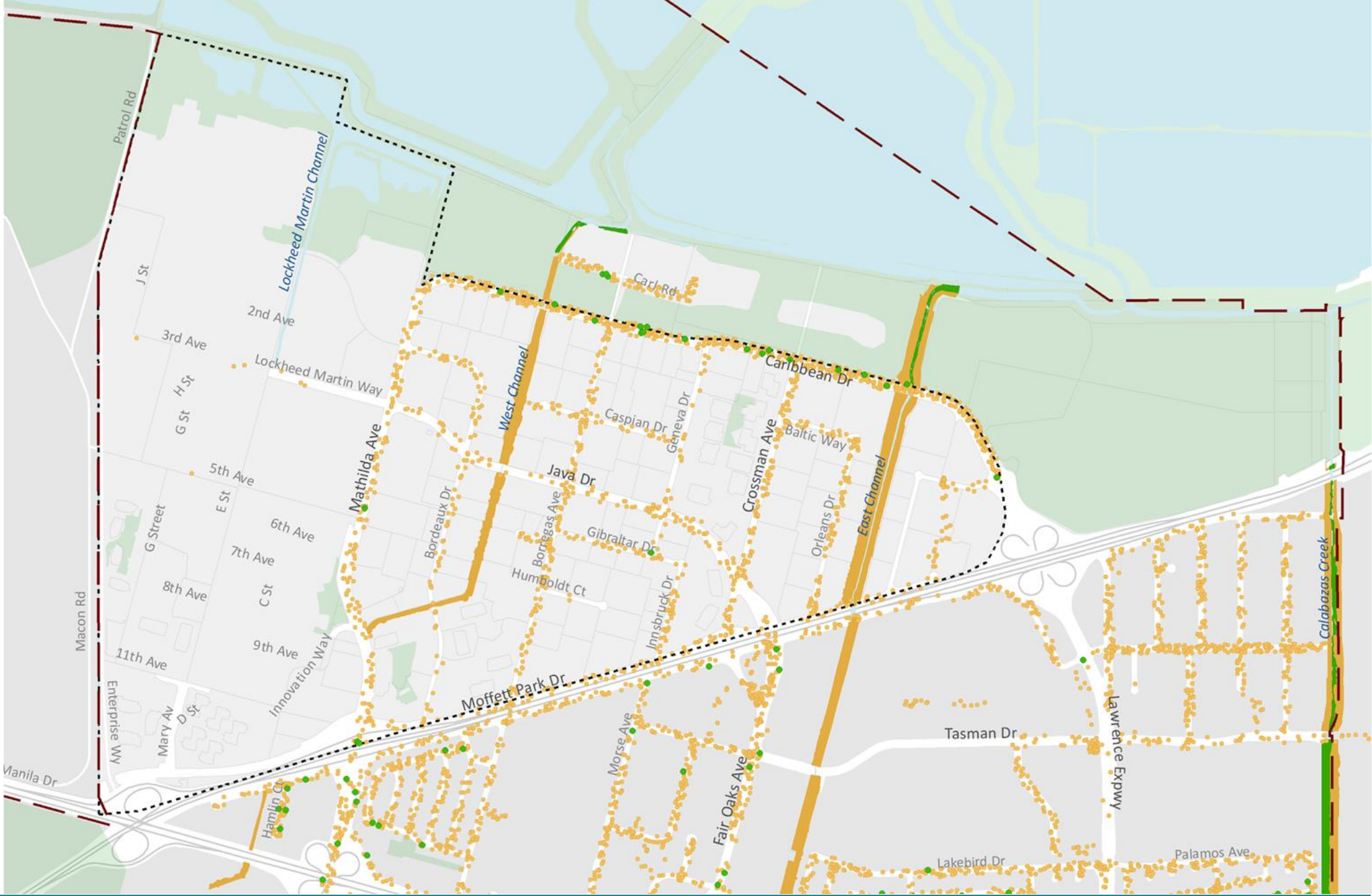


Habitat Diversity



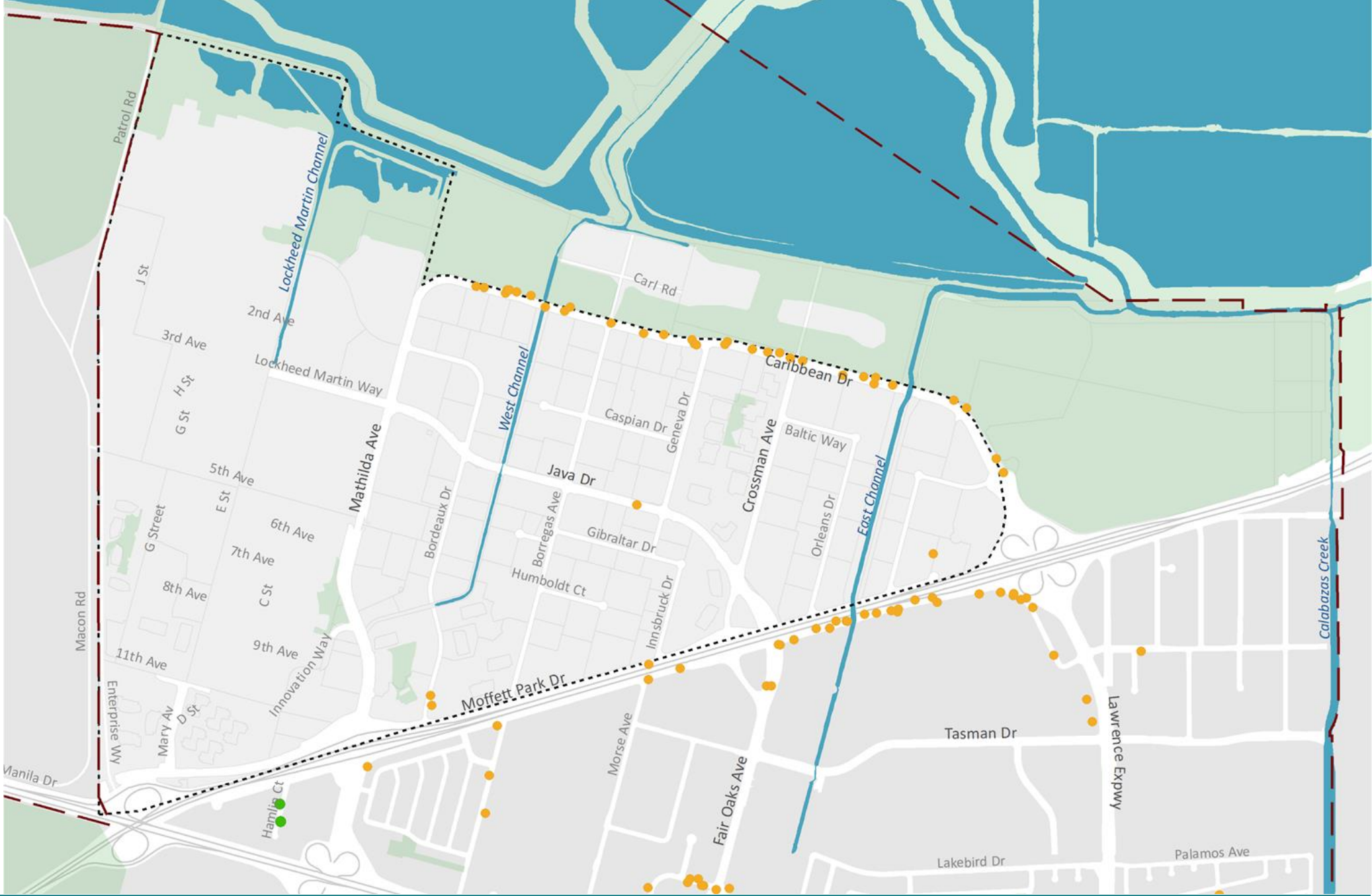
Habitat Diversity

- Native Street Tree
- Non-native Street Tree
- Native Channel Vegetation
- Non-native Channel Vegetation

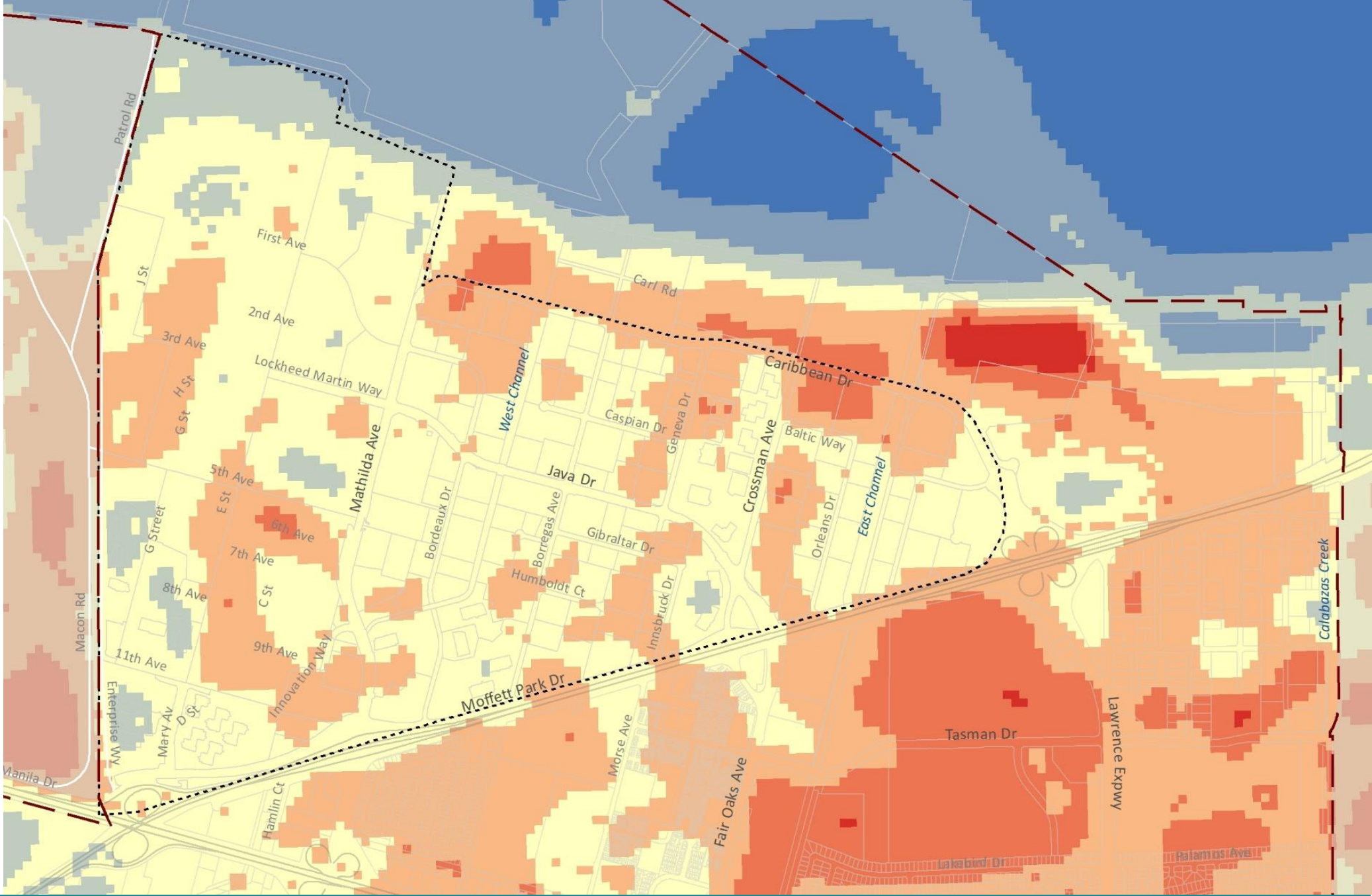
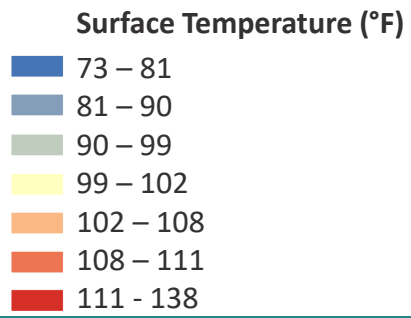


Special Resources

- Large Tree
- Water & Wetlands



Urban Heat Island Effect



Transitioning to an Ecological Innovation District



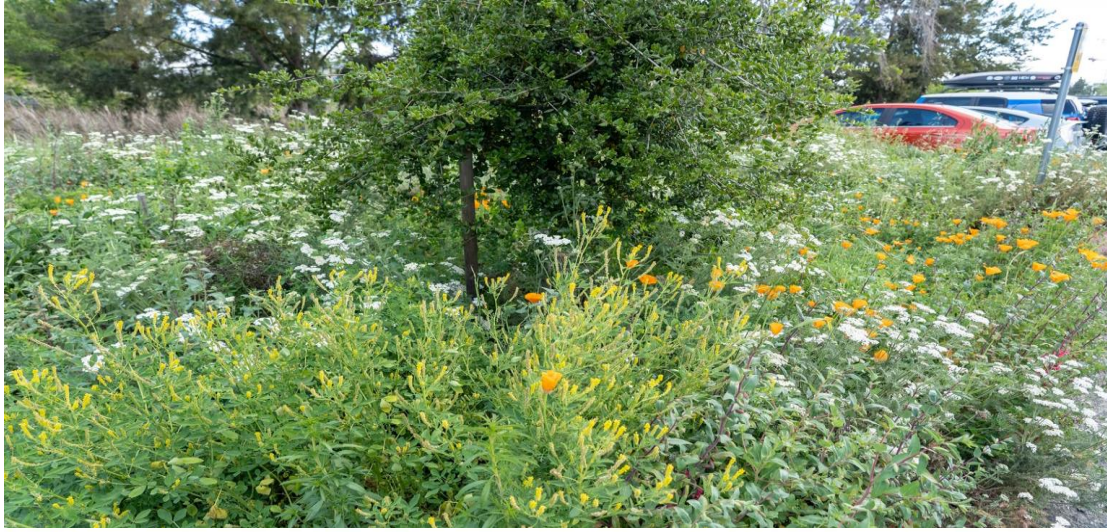
- Patches
 - **Create new** habitat patches and immersive nature experiences
 - **Improve ecological value** of all open spaces (from civic to natural areas)
 - **Increase accessibility**

Transitioning to an Ecological Innovation District



- Connections
 - **Create** safe and comfortable mobility corridors
 - **Enhance value of channels**
 - **Connect** Moffett Park to the Baylands

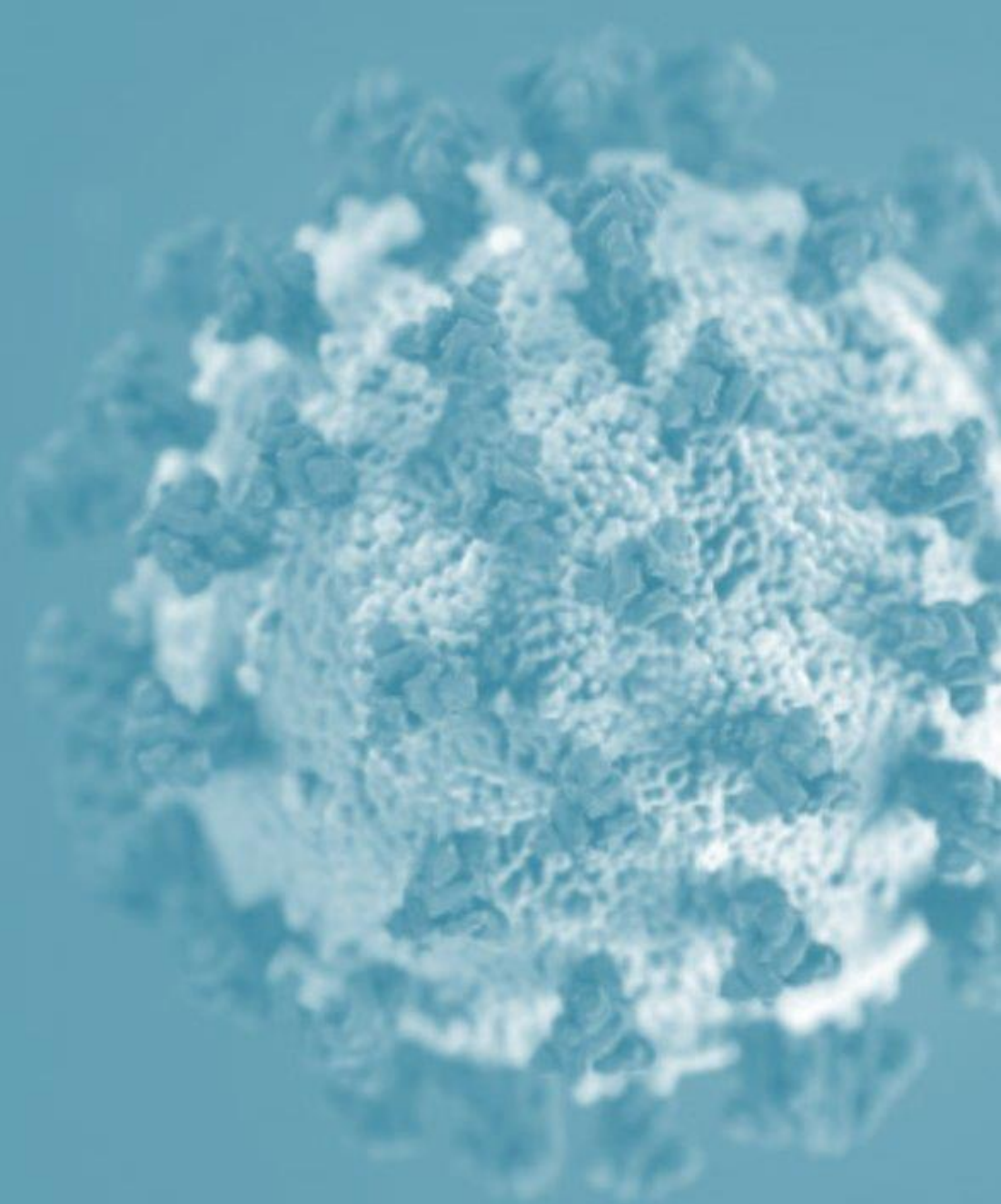
Transitioning to an Ecological Innovation District



- Matrix Quality
 - Increase canopy cover
 - Plant native Vegetation
 - Integrate stormwater and ecology

How might the impacts of COVID-19 affect ecology in Moffett Park?

- Greenspaces and corridors more important than ever
- Research shows that parks can improve mental and physical wellbeing and help build social cohesion
- Open space can be flexibly designed to accommodate social distancing now and active programming in the future





Moffett Park Specific Plan

Understanding the Future: Ecology