



Moffett Park Specific Plan

Understanding the Future: Open Space

June 2020






SUNNYVALE









A landscape photograph showing a body of water in the distance, a grassy field in the foreground, and hills under a clear blue sky. The text is overlaid on the image in white font on teal rectangular backgrounds.

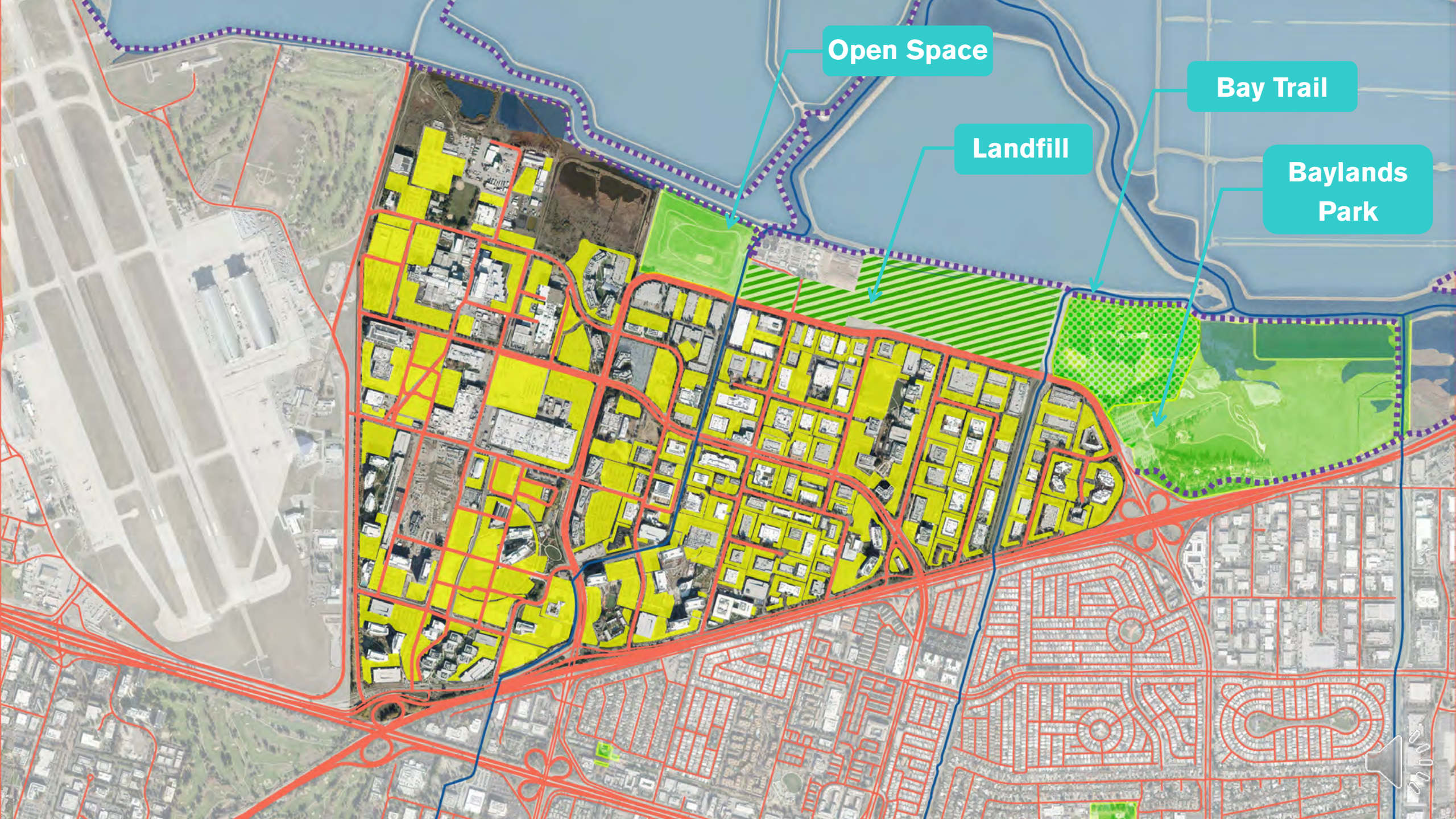
“The Moffett Park of the future is a well-connected ecological innovation district with a diverse mix of uses that serves as a model of sustainability, resilience, and economic opportunity.”











Open Space

Bay Trail

Landfill

Baylands
Park

Seasonal Wetland



West Channel



East Channel



What We've Heard: Open Space

- › Create a well-connected walking and biking network
- › Create a vibrant, 24-hour mixed-use district
- › Improve transit + connections to Sunnyvale
- › Improve the quality of life for all of Sunnyvale
- › Support urban ecology to enhance biodiversity
- › Connect people to each other and to the Bay





Open Space Network





Open spaces can support an inclusive, connected public realm:

- › A diverse range of neighborhood and destination uses
- › Opportunities for social connections and recreation
- › Equitable access and connections for all modes of travel
 - › Multi-generational invitations
- › Free and affordable public uses, amenities, & services



Open spaces can also foster a healthy and biodiverse community:

- › Support active transportation, fitness, and recreation
 - › Sustain a thriving urban forest
- › Include habitats for humans and non-human species
 - › Sequester Carbon
- › Create restorative environments that provide opportunities to connect with nature





**Open spaces can
cultivate community**





**through shared experiences at
all scales, and a wide range of
activities and uses...**





by providing a place for everyone
to be together, to play...





**and to connect with nature
and each other.**



Great open spaces come in all sizes!



Dolores Park, San Francisco



Las Palmas Park



Seven Seas Park



Market Commons, San Francisco

District/Community



Neighborhood



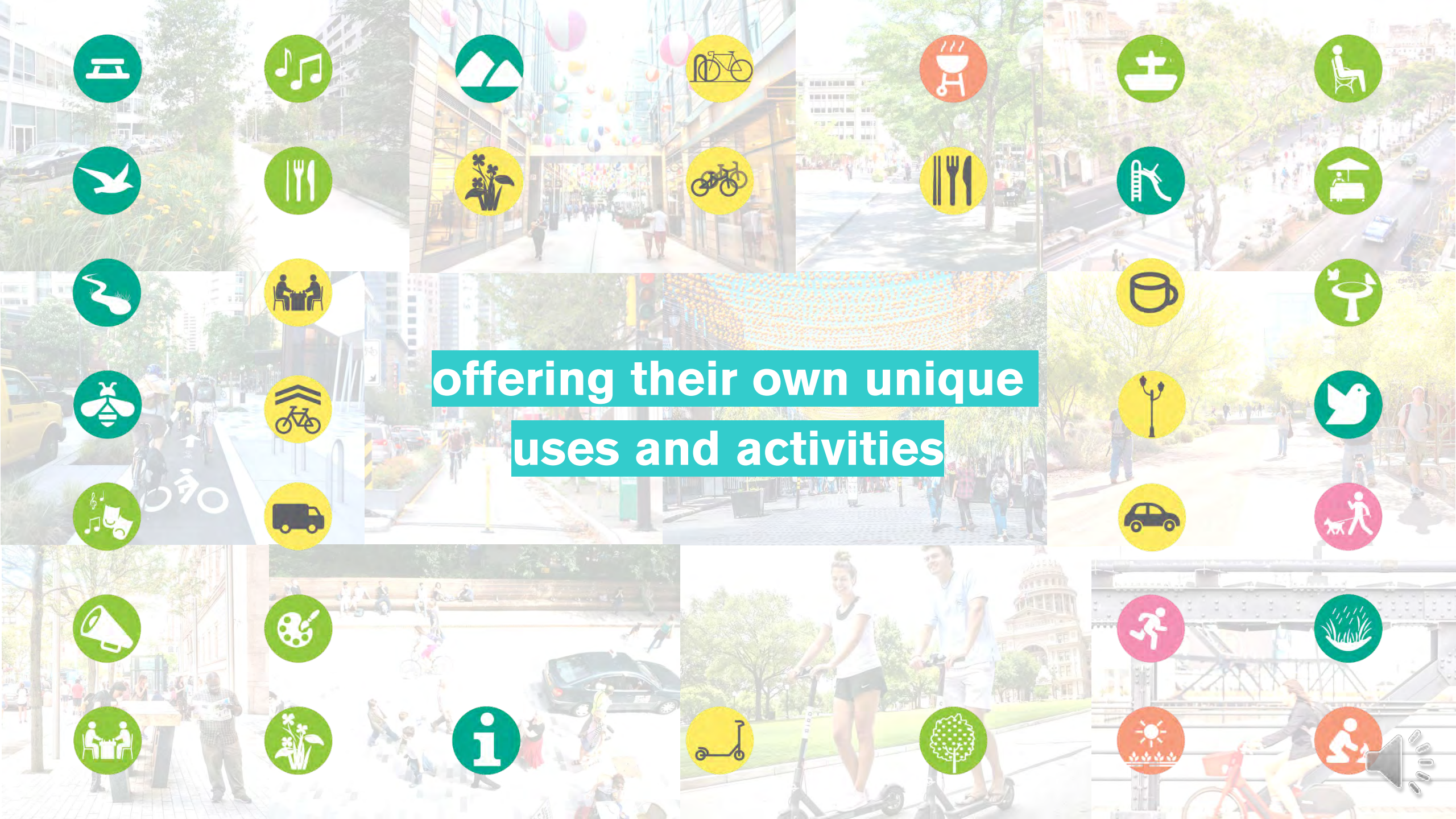
Mini - Park





**Streets and trails are
also part of the open
space network**





offering their own unique
uses and activities





providing important linkages
for our social fabric...





and serving as ecological corridors for shade, habitat, and hydrological systems.



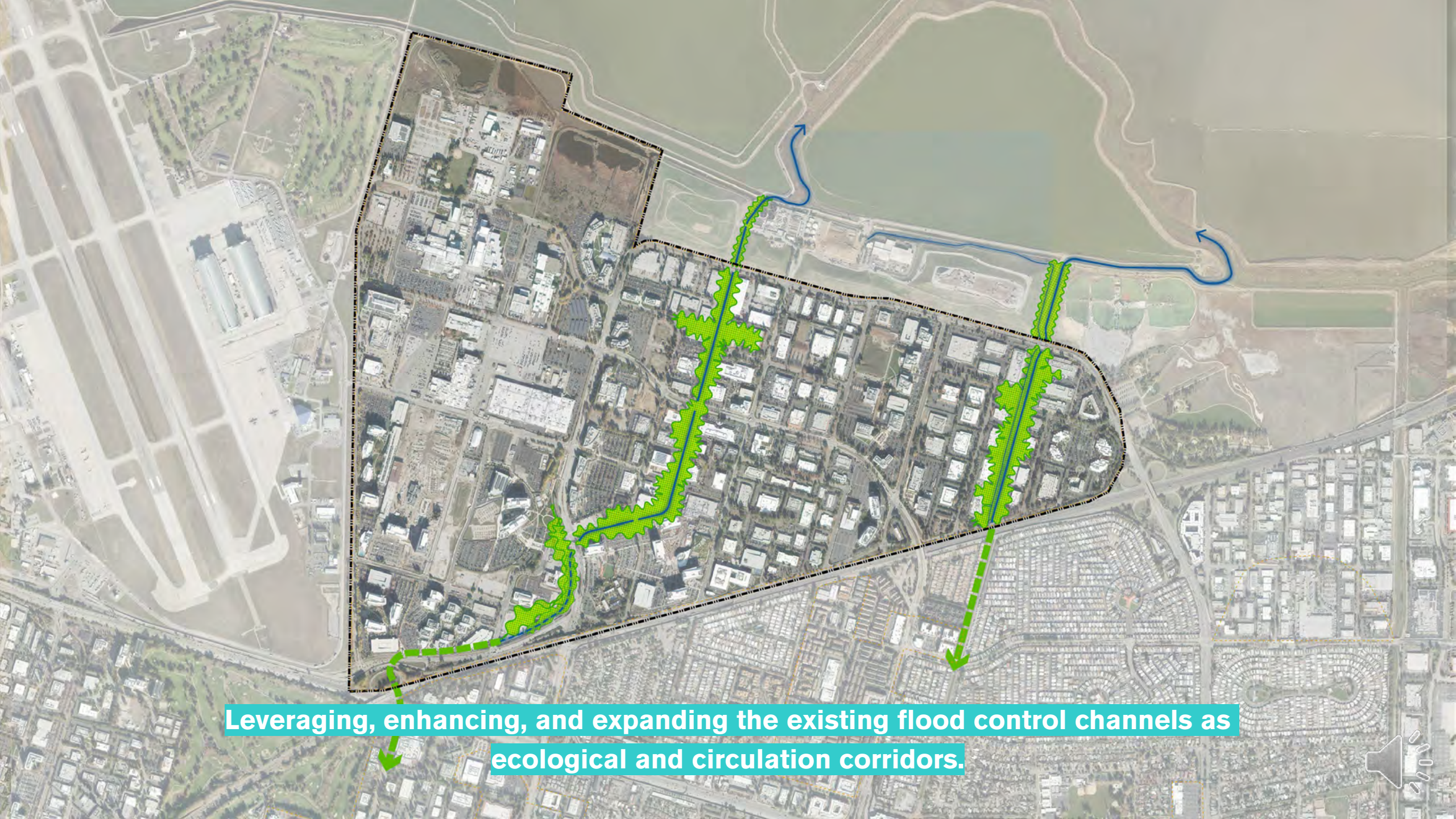
Streets of all types can nurture vibrancy.



An aerial photograph of the Moffett Park area in San Francisco. The image shows a mix of urban development, including residential neighborhoods with circular street patterns, commercial buildings, and a large industrial or airport facility on the left. A prominent teal banner with white text is overlaid across the center of the image. The background is a faded, semi-transparent version of the same aerial view.

**Here's how a plan for Moffett Park
can bring these ideas together**





Leveraging, enhancing, and expanding the existing flood control channels as ecological and circulation corridors.





Distributing parks, open spaces and ecological nodes to create a vibrant public realm that provides habitat and connections for wildlife throughout the district.





Creating a thriving urban forest and network of open spaces and trails that connect Sunnyvale to the Bay.



Tell us:

- › **What types of open space are most important for Moffett Park?**
- › **What size should new open spaces be?**
- › **What kinds of activities would you like to see in Moffett Park's open space network?**
- › **What programs and features will make Moffett Park's public spaces intercultural and inclusive?**

[TAKE OUR SURVEY](#)





Moffett Park Specific Plan

Understanding the Future: Open Space

June 2020