



Moffett Park Specific Plan

PROJECT FACTSHEET

A Roadmap for the Future

Sunnyvale community members are creating a new vision and guiding principles for the future of Moffett Park. This exciting initiative, a comprehensive update to the Specific Plan, will result in new a long-range planning document that maintains the uniqueness of Moffett Park and creates opportunities for improvements in how we manage every aspect of the district—including urban ecology, sustainability, transportation, housing, and climate change.

What is a Specific Plan?

A Specific Plan is a comprehensive planning and zoning tool for a small area within a community. It establishes the vision and guiding principles for the area and the standards to guide future development. They are separate from, but must be consistent with, a jurisdiction's adopted general plan.

What is this Effort About?

In 2004, the City adopted the Moffett Park Specific Plan and amended it in 2013. The Specific Plan focused on incentivizing office development, diversifying the industrial base, and supporting emerging businesses. The Plan laid out a vision for a smart growth pattern, locating density near VTA light rail, creating walkable blocks, and requiring sustainable design.

Today, the City faces a new set of opportunities and challenges that invite new thinking and vision. In 2019, the Sunnyvale City Council authorized an update to the Moffett Park Specific Plan that will:

- Consider the economic impacts of adding new housing
- Improve non-automotive transportation
- Promote walkable and bikeable environments
- Create an eco-innovation district
- Prepare an implementation strategy for infrastructure and services



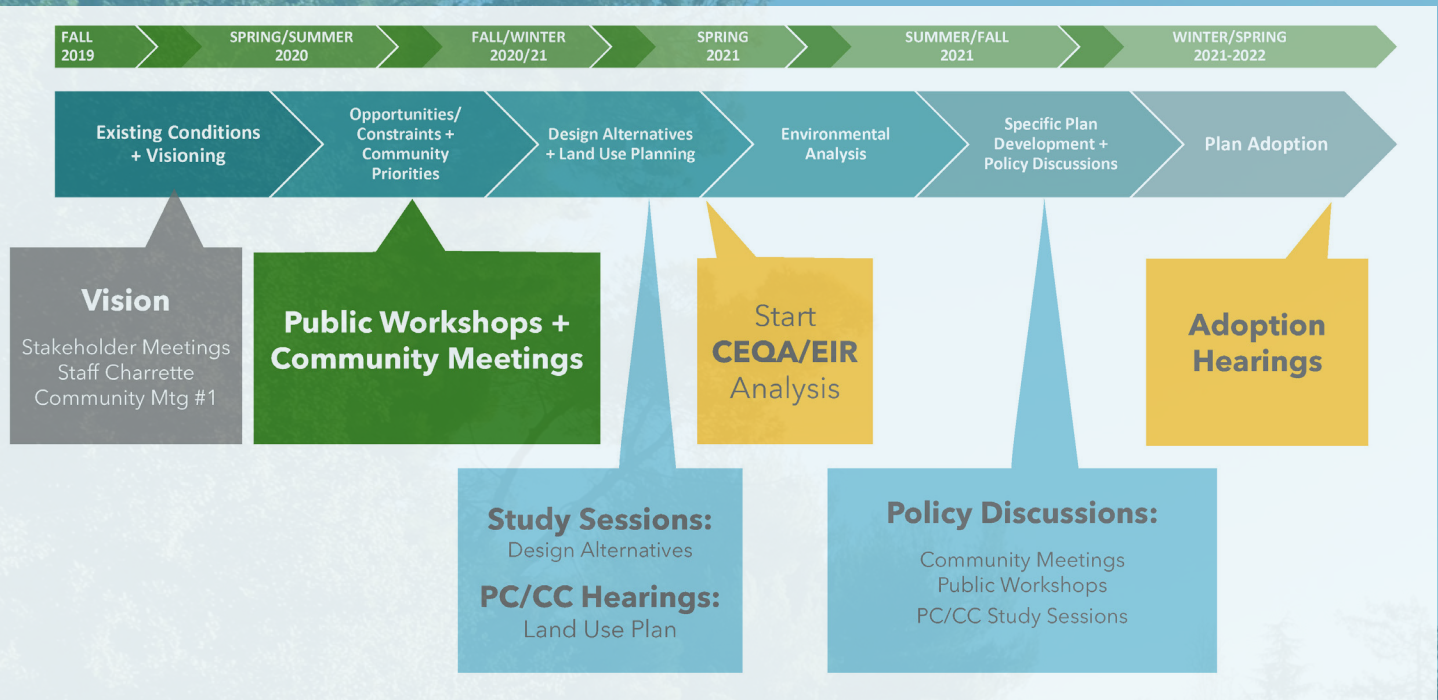
What Topics will the Specific Plan Cover?

The Moffett Park Specific Plan will cover a range of topics both unique to the community and required by State law. These include:

- Land Use
- Development Standards + Design Guidelines
- Public Realm + Placemaking
- Mobility + Transportation
- Parks + Open Space
- Urban Ecology
- Sustainability + Climate Change
- Utilities + Public Services
- Economics + Markets

How Long will the Specific Plan Process Take?

The Moffett Park Specific Plan Update process is anticipated to occur between Fall 2019 through Spring 2022. It is anticipated that the major project tasks will be completed based on the following schedule:



Community Engagement

The City has designed a robust engagement plan with many ways to get involved in participate in the process. It is designed to maximize the number of opportunities and types of activities for visioning, collaborating, decision-making, and more. Together we can ensure that the Specific Plan, our guiding vision for the next two or three decades of Moffett Park's evolution, reflects the concerns and aspirations we all share. Community voices will direct this plan, so make yours heard!

The engagement effort will be systematic and inclusive, centered on key objectives including:

- Reaching diverse community groups and gathering a variety of perspectives;
- Offering various methods for community participation;
- Preparing visually attractive and easy-to-understand informational materials; and
- Analyzing and sharing community input at relevant points in the process.

City staff and consultant team will listen, inform, and translate the community's and stakeholders' viewpoints and vision, and continually report back on how the information gathered will be shared and used.

Want to Stay Updated on the Project?

Join Sunnyvale's mailing list for news and updates about the Specific Plan.