



Moffett Park Specific Plan

Community Workshop #1

The purpose of today's meeting is...



Provide an overview of the Moffett Park Specific Plan Update



Review existing conditions, issues, and opportunities



Gather feedback from the community on project goals, conceptual plans, and big ideas



Highlight upcoming engagement events and ways to get involved

What is the Moffett Park Specific Plan Update?



CITY OF SUNNYVALE MOFFETT PARK SPECIFIC PLAN

What is a Specific Plan?

- A **comprehensive** planning and zoning tool for a small area
- Establishes the **vision and guiding principles**
- Defines **policy and development standards**
- Strong focus on **implementation**



Why Update the Existing Specific Plan?



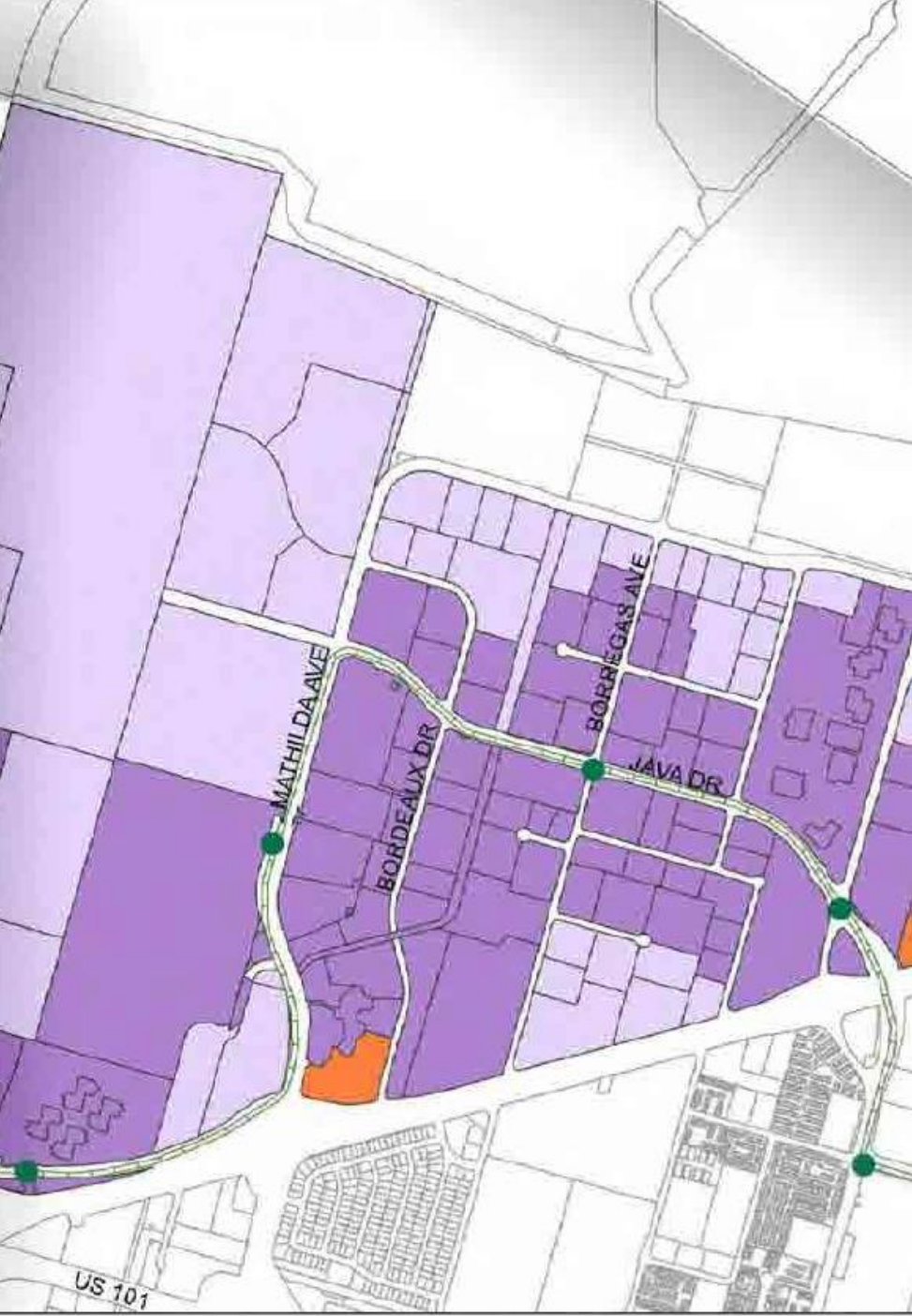
UPDATE SPECIFIC PLAN TO REFLECT
COMMUNITY VALUES + NEW ISSUES



EMERGING THEMES IN PLANNING



NEW STATE LAWS



Specific Plan Requirements

- **Distribution, location, and extent of the uses of land, including open space**
- Proposed distribution, location, and extent and intensity of major components of **transportation and infrastructure**
- **Development standards**
- A program of **implementation measures**
- A statement of the **relationship of the specific plan to the general plan**

Existing Specific Plan

- Originally **published in 2004**, amended in 2013
- Focused on **office development, diversifying the industrial base, supporting emerging industries, retaining / attracting business**
- Supported **smart growth pattern**, locating density near transit, creating walkable / bikeable blocks, and sustainable design
- Evaluated a **buildout of 24.3m SF** of non-residential development

City Council + Planning Commission Direction

- Create comprehensive **community involvement strategy**
- Consider the potential **economic impacts of adding housing** while directing growth toward **transit supportive uses and improvements**
- Redefine the Moffett Park Specific Plan as an “**Ecological and Innovation District**”
- Improve vehicular, pedestrian, bicycle and transit **connectivity**
- Develop and implement **urban design standards for streets, streetscapes, buildings and open space**, which promote walkable and livable environments
- Prepare an **implementation strategy for infrastructure and services**
- Prepare a program-level environmental impact report

CITY OF
SUNNYVALE

CLIMATE
ACTION
PLAN



FINAL REPORT
**Zero Waste Strategic Plan:
A Quantifiable Approach**



For the
City of Sunnyvale



Building on Existing Plans

Technical Studies



Infrastructure

Water supply
Public infrastructure, including water, sanitary sewer, and stormwater



Transportation

Bike + pedestrian circulation
Traffic impact analysis
Parking demand analysis + transit demand management



Economic

Market analysis + affordable housing strategy
Economic impact analysis
Fiscal impact analysis



Climate Change

Sea level rise and adaptation study
Greenhouse gas emissions



Environmental

Urban ecology
Air quality
Biological assessment
Air quality
Cultural resources
Noise and vibration assessment

Project Timeline



Engagement Plan Objectives

- Reaching diverse community groups and gathering a variety of perspectives;
- Offering various methods for community participation;
- Preparing visually attractive and easy-to-understand informational materials; and
- Analyzing and sharing community input at relevant points in the process.



Planned Engagement Activities

- Interactive project website
- Stakeholder + community leader meetings
- Technical working group
- Community workshops
- Pop-up meetings + community events
- Neighborhood meetings
- Online engagement + surveys

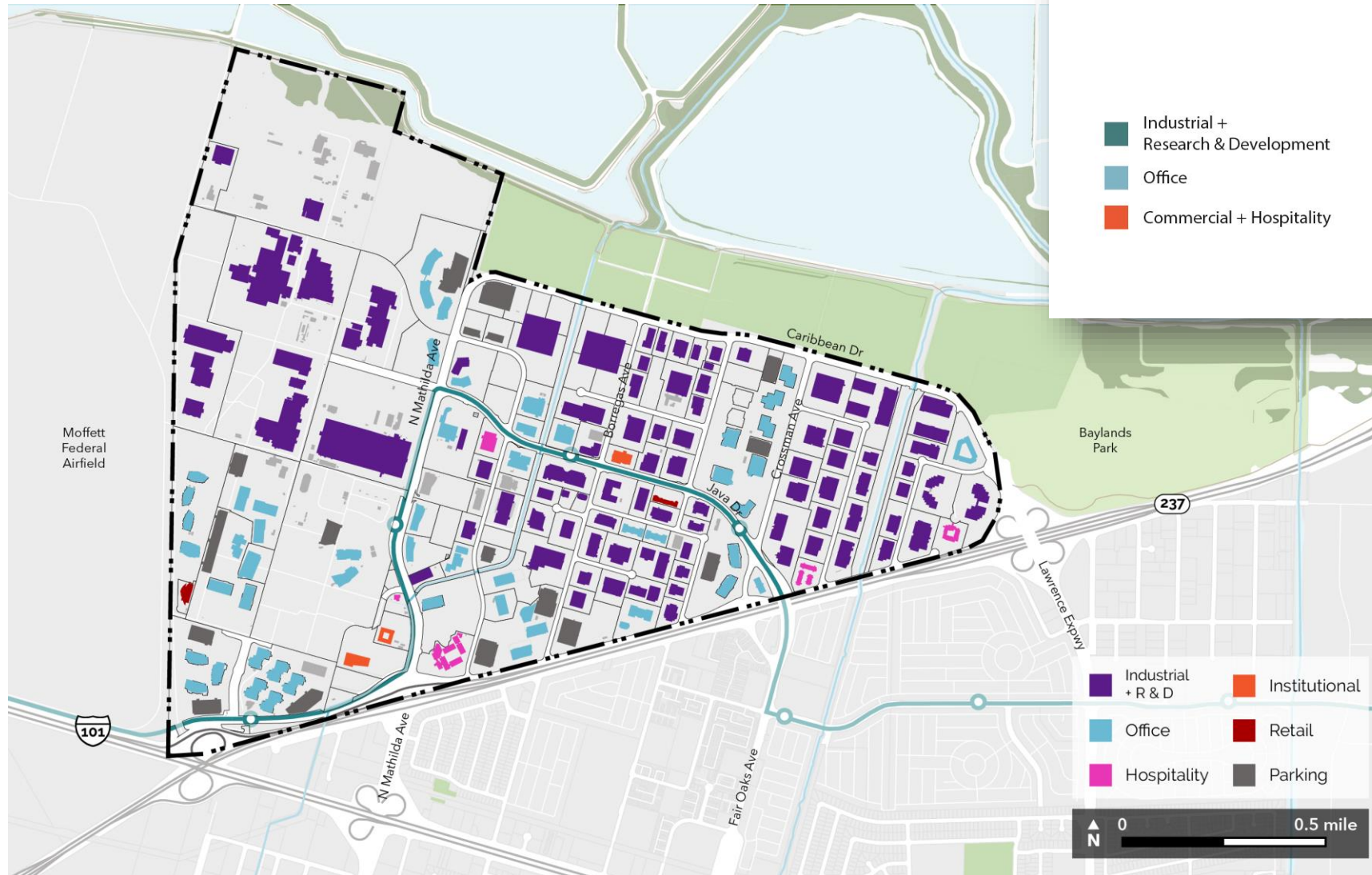


Moffett Park Today

Plan Area

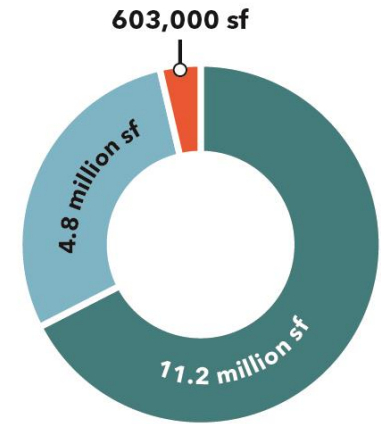


Existing Land Use



Land Use

- Industrial + Research & Development
- Office
- Commercial + Hospitality

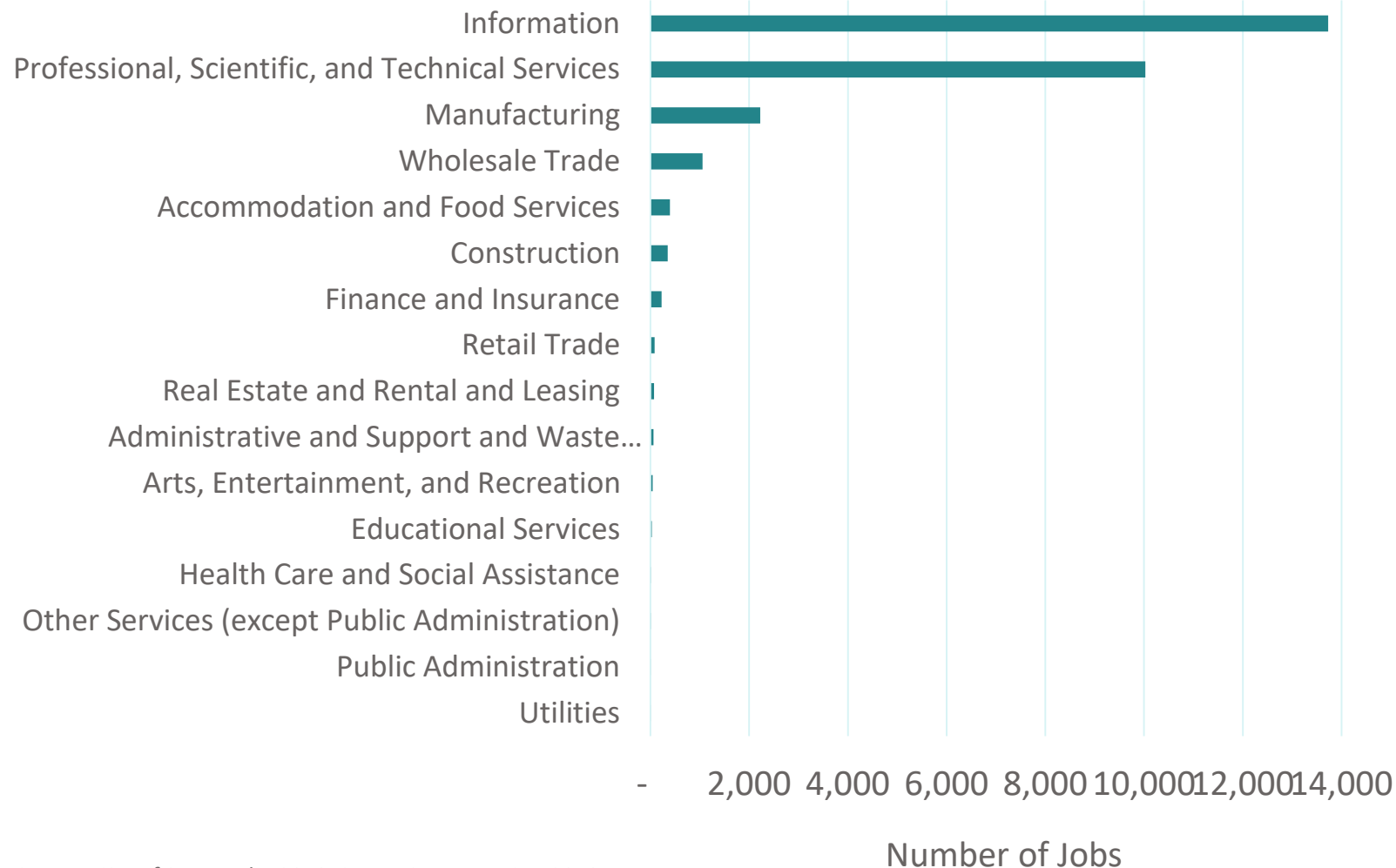


- Industrial + R & D
- Office
- Hospitality
- Institutional
- Retail
- Parking



Moffett Park Employment

Employment by Industry, 2019



Share of Large and Small Businesses, 2019

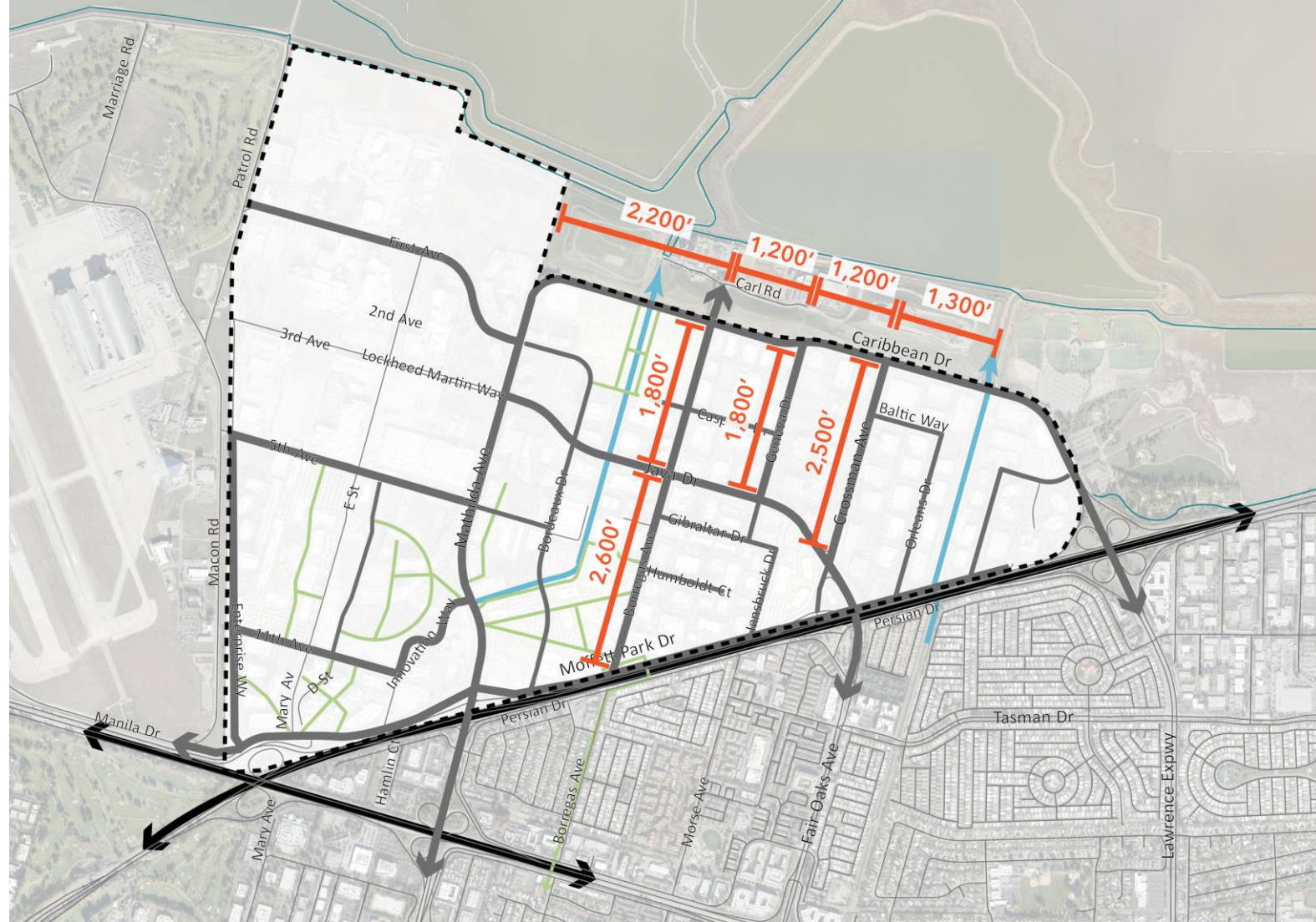
Number of Employees	Number of Establishments	Share
50 or greater	44	26%
Less than 50	128	74%
Total	172	

Source: City of Sunnyvale, 2019; Strategic Economics, 2019.

Form + Character



Block Pattern



Walking and Biking Conditions

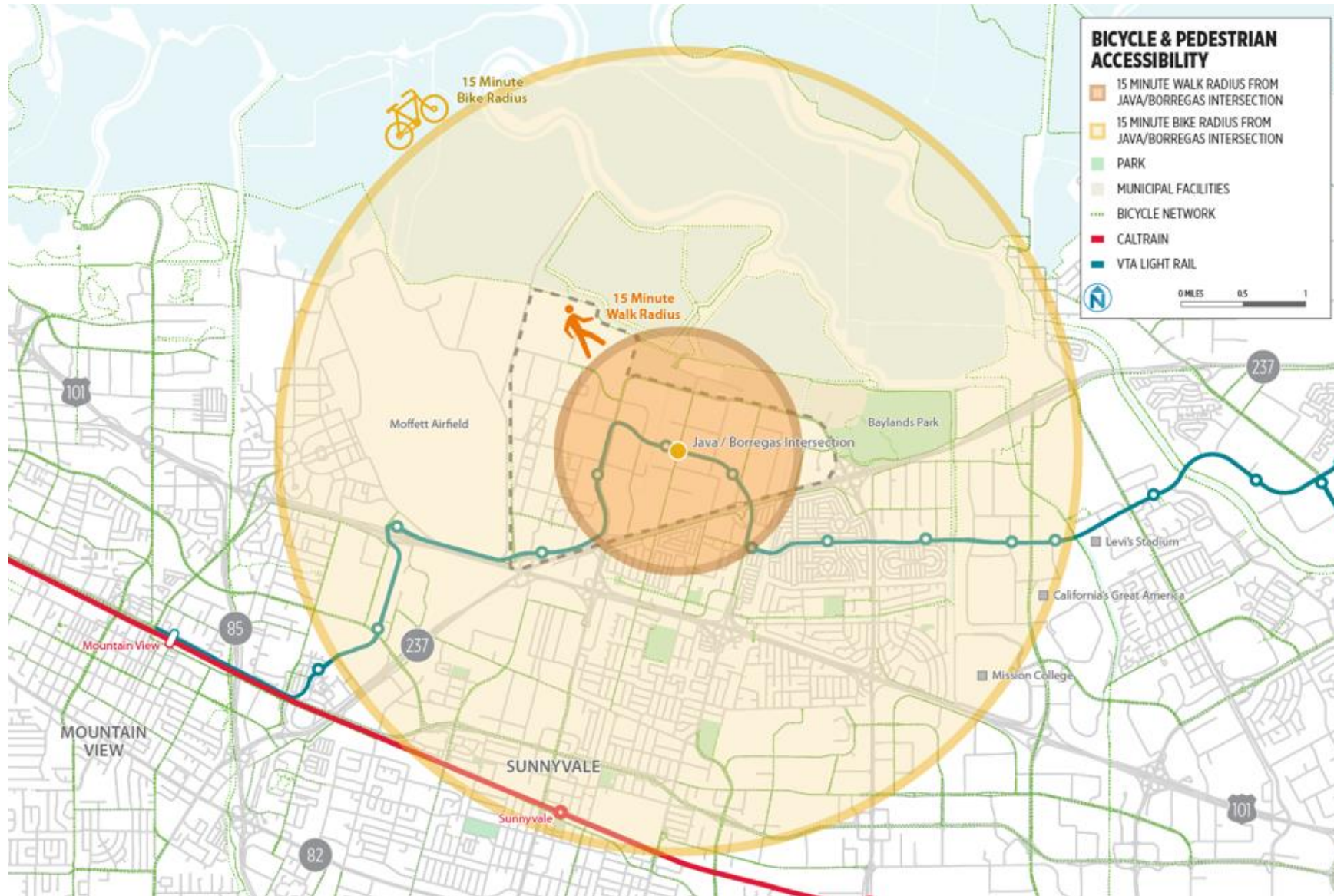
Bike network gaps (Mathilda/Innovation Way)



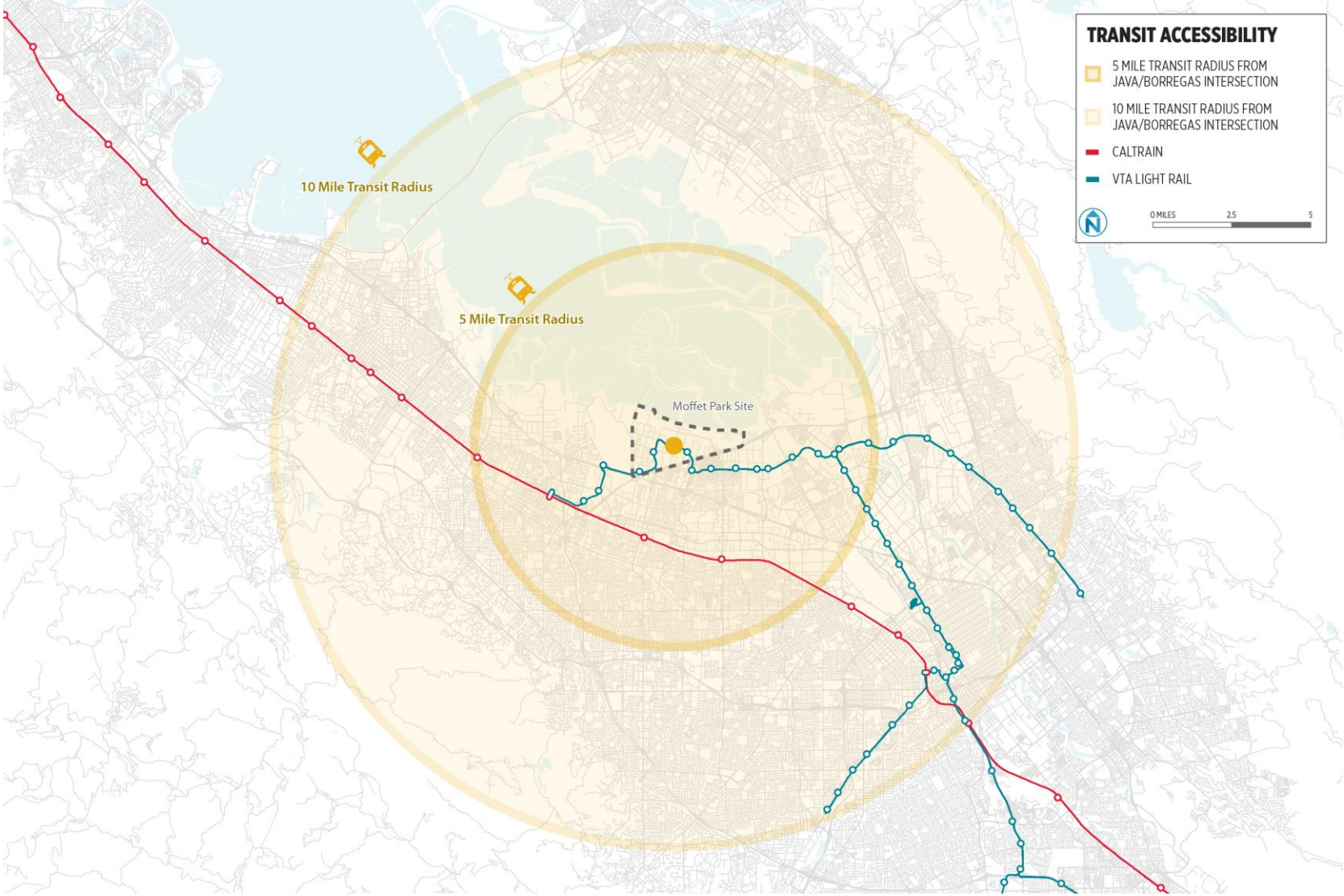
Uncomfortable intersections (Enterprise/5th Ave)



Walkable + Bikeable Scale



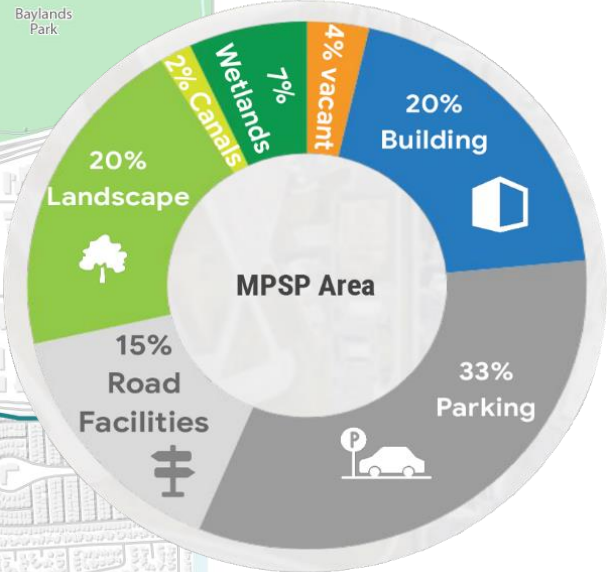
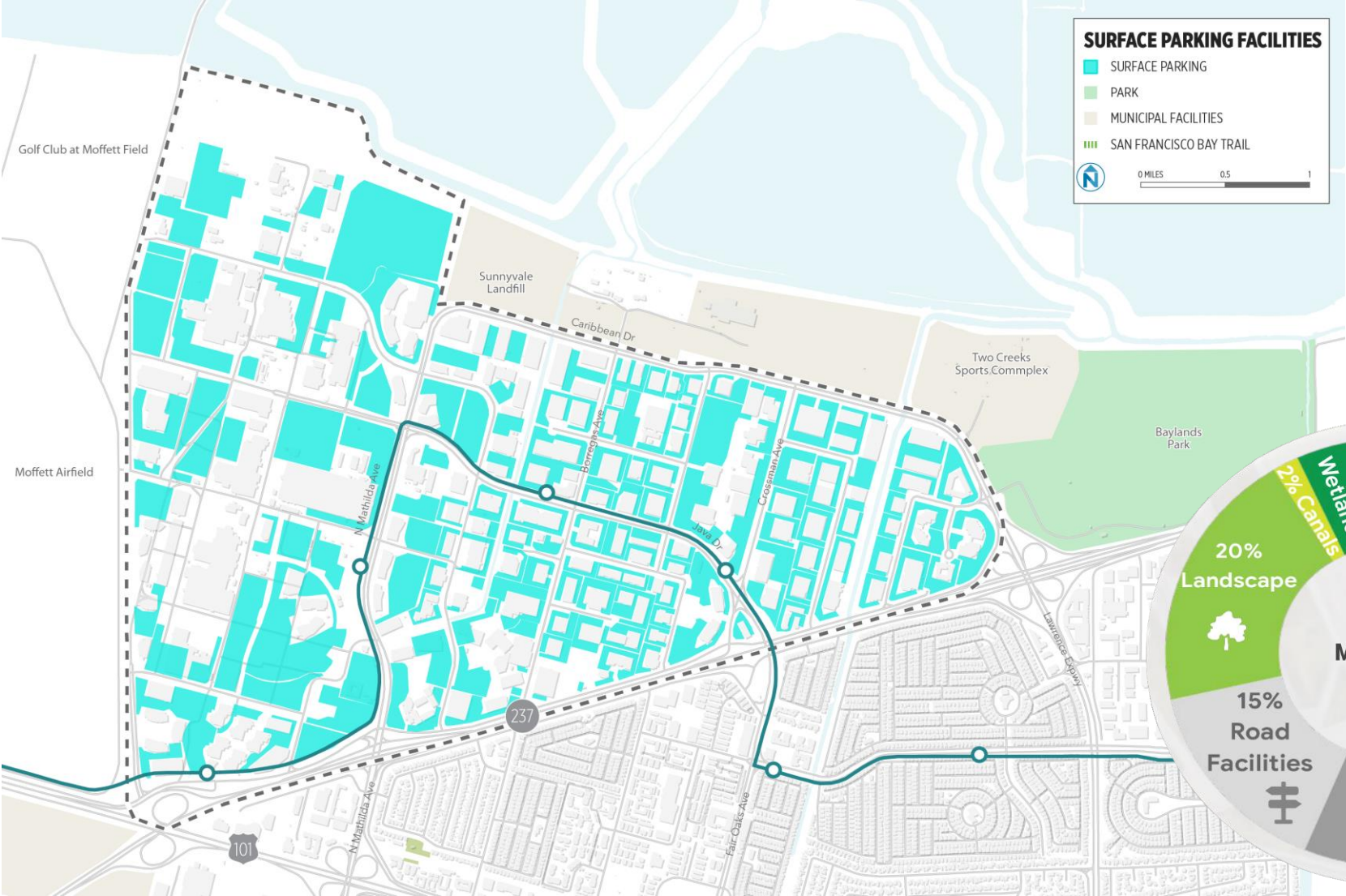
Transit Connectivity



Gateway Traffic



Surface Parking

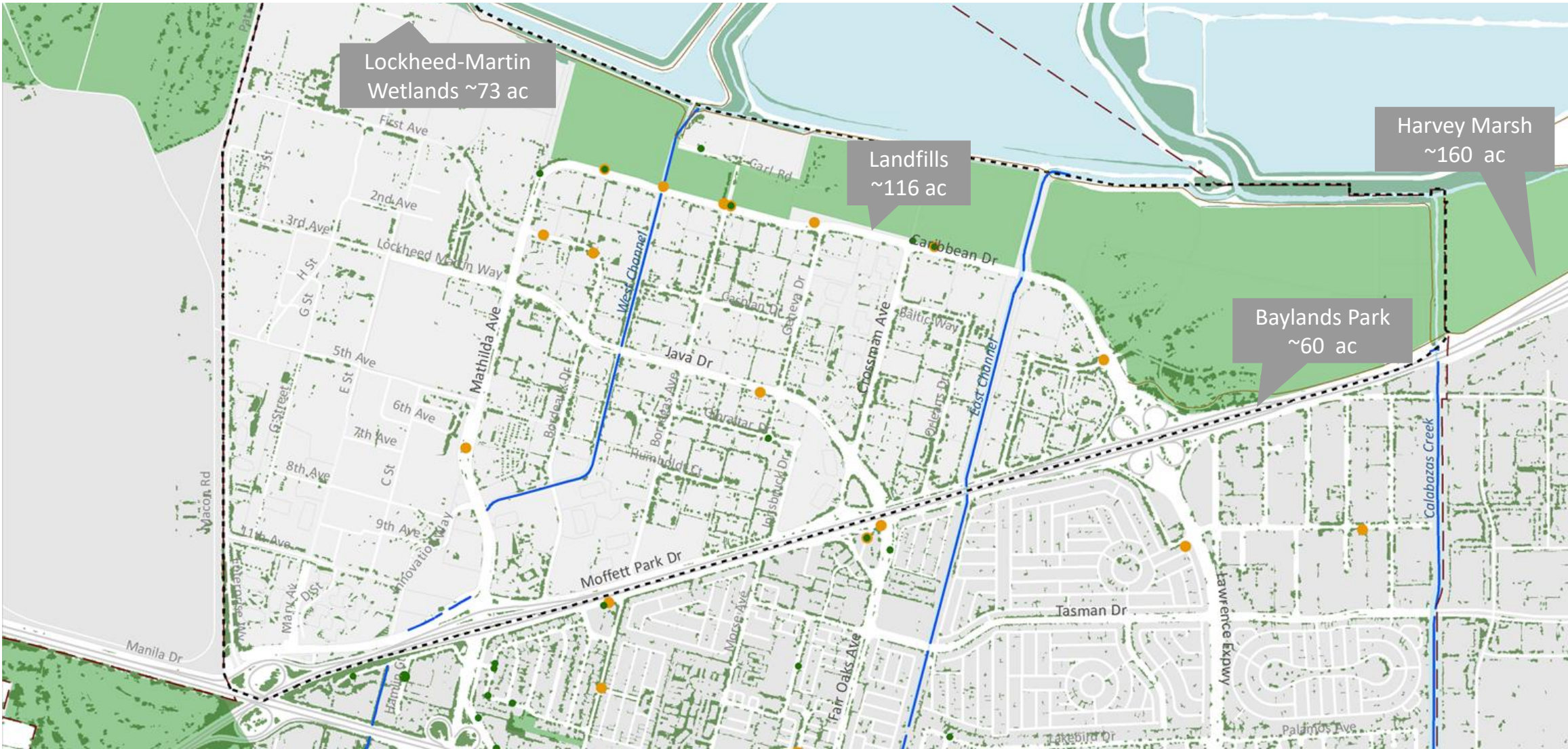


Parks + Open Space

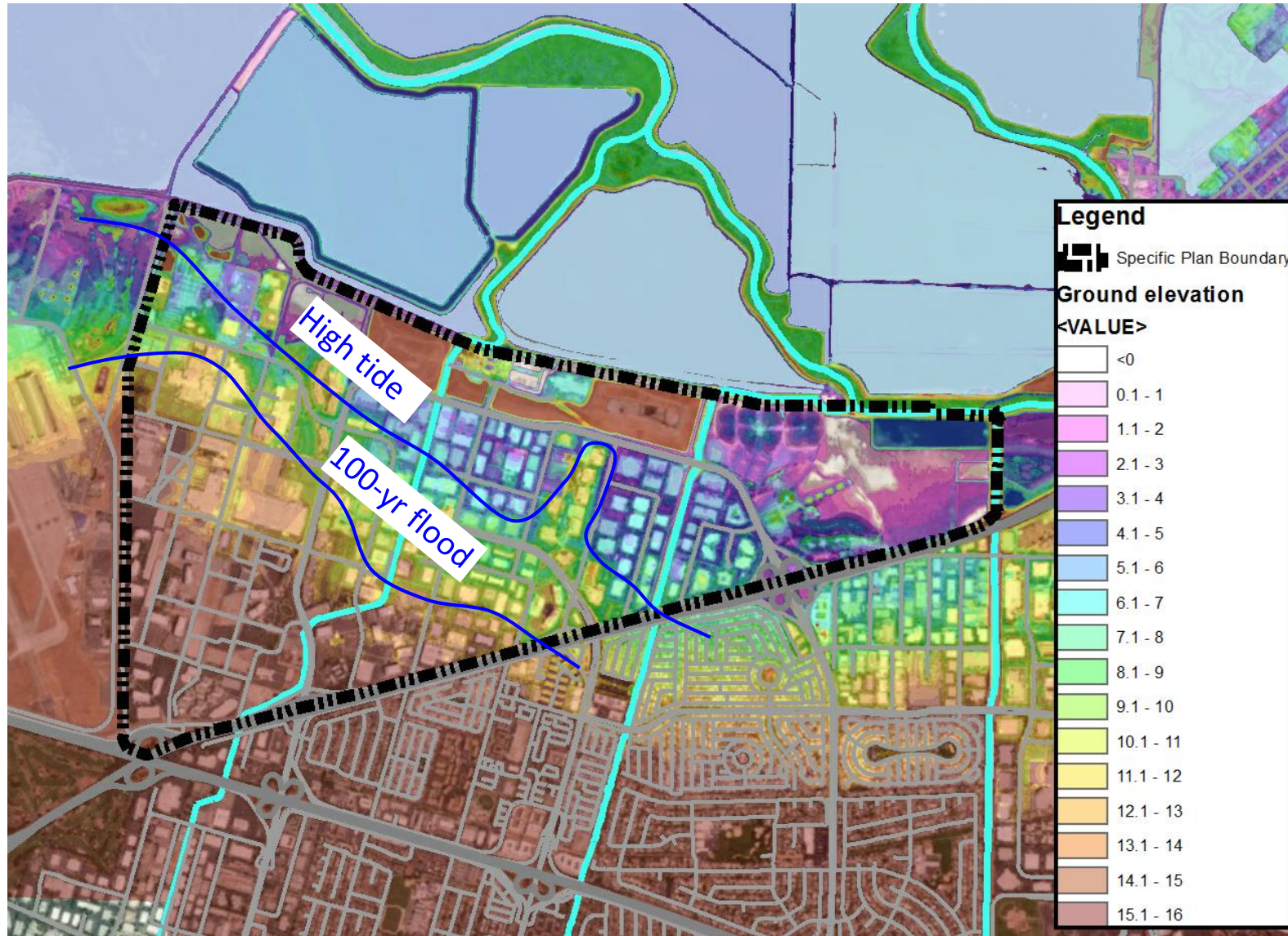
- No parks within the Specific Plan Area
- Opportunity to connect to neighborhoods located immediately south of Moffett Park (Morse/Tasman) that are underserved in terms of park space



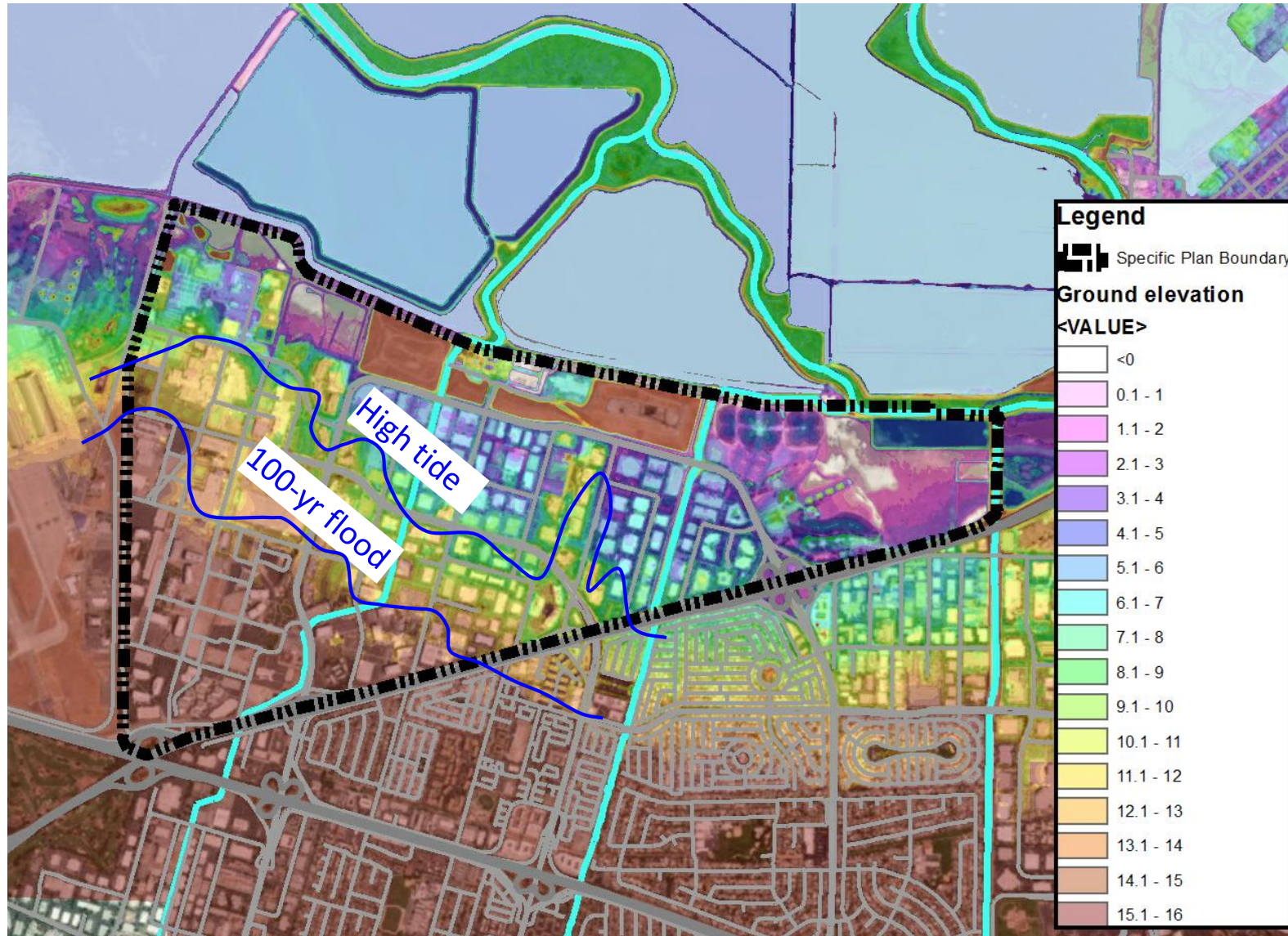
Tree Canopy



Existing Flood Hazard



Flood Hazard with 3ft of Sea-Level Rise

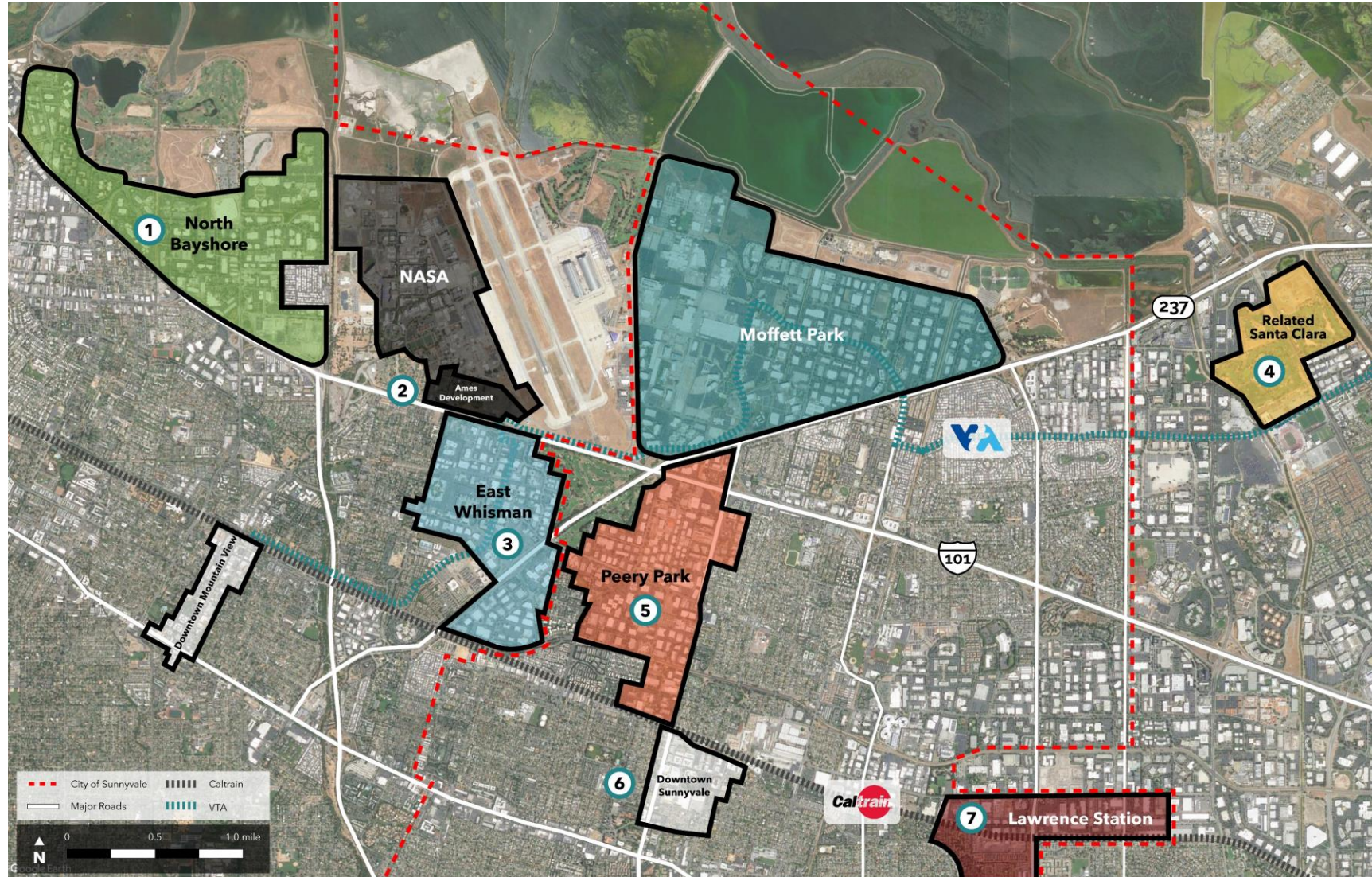


Ongoing SLR Projects

- South Bay Salt Pond Restoration Project
- Sunnyvale WPCP Master Plan
- Calabazas Creek and San Tomas Aquino Creek Realignment
- East and West Channel Improvement Project



How does Moffett Park fit within the subregion?



- 1 North Bayshore
9,850 DU
3.6m sf Office
- 2 NASA Ames Development
1,930 DU
1.3m sf Multi-Use
- 3 East Whisman
5,000 DU
2.3m sf Office
- 4 Related Santa Clara
1,680 DU
5.4 m sf Office
- 5 Peery Park
219 DU
2.2m sf Office
- 6 Downtown Sunnyvale
843 DU
860,000 sf Office
- 7 Lawrence Station
2,839 DU

What Are Your Big Ideas for
Moffett Park?

6 Activity Stations

- Background Information on the Specific Plan
- Key Priorities / Guiding Principles
- Mixed Use Neighborhood Concepts
- Open Space and Urban Ecology
- Mobility
- Precedent Studies



Background Information on the Specific Plan

Purpose: Learn more about the Specific Plan area + ask questions about the process



Moffett Park Today

Baseline Statistics

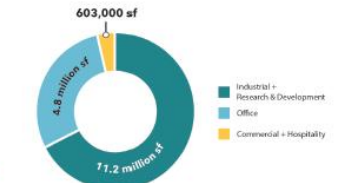
Plan Area	1,284.2 acres
Private Parcels	1,156 acres

Land Area:	
Public Streets/ROW	127.6 acres
Private Streets	34 acres
Subtotal	161.6 acres (12.6%)

Commercial Floor Area:	
Existing	17,852,459 sf
Existing + Pipeline	20,822,934 sf

Land Use

Acres	Residents	Dwelling Units
1,284 a	0	0 du



Legend

- Stormwater Channels
- Streets
- City Parks
- VTA Lightrail Line + Stations



Base Maps

January 29, 2020



Key Priorities

Purpose: Guiding Principles reflect the core values of the community and establish targets to guide development of the Specific Plan

1

Vote 3 times for the key priorities you think are most important

2

Write any phrases, ideas, or concepts that should be added on a post-it

What are your key priorities for Moffett Park?

DRAFT Intent: A well-connected ecological innovation district with a diverse mix of uses that serves as a model of sustainability, resilience, and economic opportunity.

- 1 Increase capacity of tech sector business
- 2 Preserve R+D/light industrial local businesses
- 3 Facilitate district-scale infrastructure
- 4 Create a well-connected walking and biking network
- 5 Improve transit and connections to Sunnyvale
- 6 Inspire creativity and social interaction in hubs of activity
- 7 Create a vibrant 24-hour mixed-use district
- 8 Promote housing at all income levels
- 9 Support urban ecology to enhance biodiversity
- 10 Connect people to nature and the Bay
- 11 Design for no net new vehicle trips
- 12 Improve the quality of life throughout all of Sunnyvale
- 13 Mitigate impacts of climate change and sea level rise
- 14 Create destination open spaces
- 15 Create unique sense of place

Mixed-Use Neighborhood Concepts

Purpose: Review and discuss different land use concept plans for Moffett Park

1

Review the different mixed use and industrial concepts

2

Identify ideas you like or would like to change and place a sticker on the map

3

Write any phrases, ideas, or concepts that should be added on a post-it

4

If you have other ideas not reflected at the station, draw them on a blank map

A. String of Neighborhoods



C. Java Focused Main Street



B. Two Activity Centers



D. Geneva Focused Main Street



Ideas for Creating Mixed-Use Neighborhoods

Add a dot for your preferred conceptual land use idea.

A. String of Neighborhoods

B. Two Activity Centers

C. Java Focused Main Street

D. Geneva Focused Main Street

Legend

- Streets
- Lockheed Martin
- Activity Centers + Main Streets
- Village Corners
- Mixed-use Area



Moffett Park
Specific Plan

Conceptual Plan Ideas

February 12, 2020



Open Space + Ecology Concepts

Purpose: Review and discuss different open space toolkit ideas for Moffett Park

1

Review the different open spaces typologies

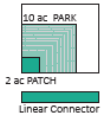

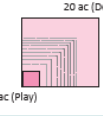

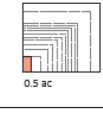

2

Answer the questions on a post-it


3

If you have other ideas not reflected at the station, draw them on a blank map

Open Space Toolkit

		SIZE (ACRES)	PROGRAM EXAMPLES	
PARK	EXISTING	223 ac TOTAL IN SUNNYVALE	25 ac of athletic fields in Sunnyvale	72 ac developed parkland in Sunnyvale
	ECOLOGICAL / HYDROLOGICAL		<ul style="list-style-type: none"> Picnic Education & Interpretation Avian Habitat Photo Point 	<ul style="list-style-type: none"> Birding Pollinator Habitat Riparian Habitat Upland Habitat Playground Trail Hiking Stormwater Management + Flood Mitigation Stormwater Treatment
	CIVIC/CULTURAL		<ul style="list-style-type: none"> Games Interactive Fountain Demonstration Photo Point 	<ul style="list-style-type: none"> Food & Beverage Retail Farmer's Market Celebrations/Special Events Cultural Performance Public Art
	SOCIAL/RECREATION		<ul style="list-style-type: none"> Active Recreation Dog Park Playground Education & Interpretation 	<ul style="list-style-type: none"> Celebrations/Special Events Food & Beverage Picnic
SPECIAL USE AREA		355 ac in 9 facilities TOTAL IN SUNNYVALE	Sunnyvale Golf Course	Sunken Gardens Nine-Hole Course
HYBRID				
	MOBILITY		<ul style="list-style-type: none"> Shared Ways Green Link Bikeways 	<ul style="list-style-type: none"> Streets Alleys
PRIVATE				
	CAMPUS / WORKPLACE		<ul style="list-style-type: none"> Active Recreation Games Public Art Retail 	<ul style="list-style-type: none"> Celebrations/Special Events Food & Beverage Picnic
	RESIDENTIAL		<ul style="list-style-type: none"> Gardens Active Recreation Games Public Art 	<ul style="list-style-type: none"> Farm Food & Beverage Picnic BBQ

1" = 600'-0"



Moffett Park Specific Plan

Open Space Toolkit

Mobility Concepts

Purpose: Review and discuss the big mobility ideas for Moffett Park

1

Review the different mobility ideas and tell us what you think!

2

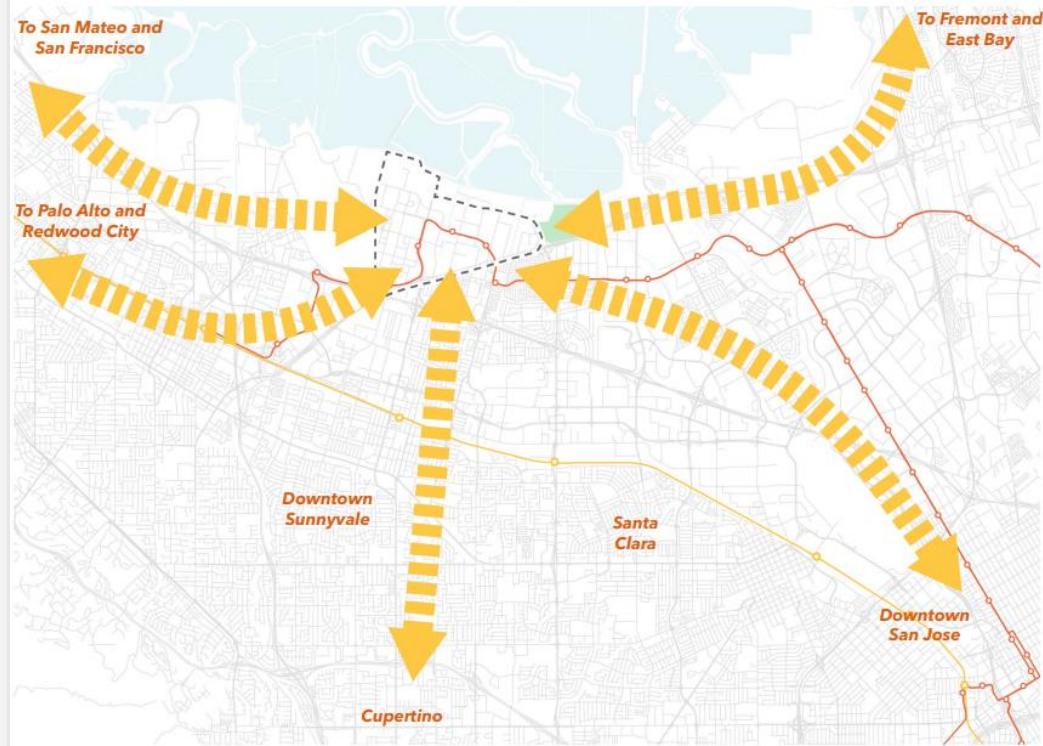
Answer the questions on a post-it

3

If you have other ideas not reflected at the station, draw them on a blank map

Big Idea: Regional Transit Connections

Enhance regional bus and rail service to improve regional connections and reduce reliance on personal vehicles



Moffett Park Today

Regional connections via light rail and express bus are limited and light rail service has not been cost effective

-  New light rail service arrives every 15 minutes at peak times, but less frequently on nights and weekends
-  One new express bus route connects Moffett Park to downtown Sunnyvale and San José

Opportunities

Rethink the current alignment and frequency of transit service to increase efficiency and frequency

-  Rethink the current alignments and frequency of transit service to increase efficiency and frequency
-  Provide service at night and on weekends so that transit is an appealing and reliable alternative to driving
-  Minimize wait times with frequent service and real-time transit information
-  Leverage regional investment in Managed Lanes to support new regional express buses

Precedent Studies

Purpose: Provide a perspective on land use opportunities, open space, and other community needs



	Acreage	Residents	Dwelling Units
	649 a	18,000	9,850 du
	1,156 a	0	0 du

Land Use



■ Industrial
 ■ Residential
 ■ Office
 ■ Open Space

■ 190,000 sf Retail





Moffett Park Specific Plan

Community Workshop #1